

Park Lofts, Lyham Road, Brixton, SW2

3 bedroom maisonette for sale

£1,000,000

Share of Freehold

Property Details

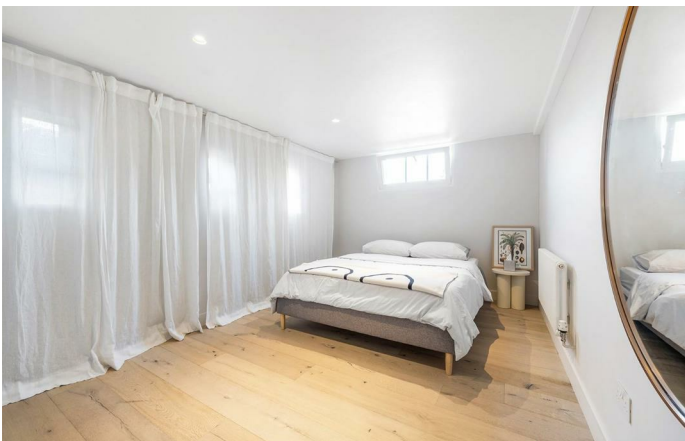
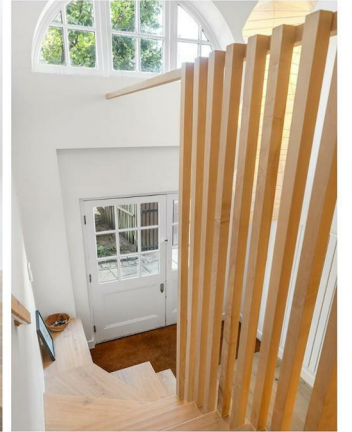
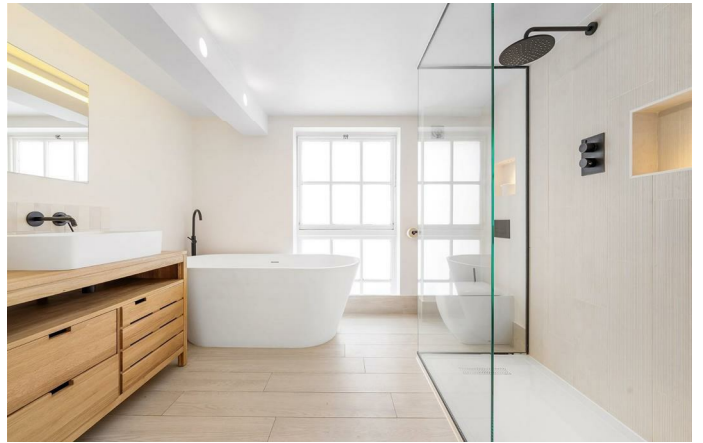
Architecturally renovated in 2022, this exceptional three bedroom, two bathroom split-level maisonette offers over 1,700 sq ft of loft-style living within the impressive Victorian school conversion of Park Lofts. Featuring two private entrances, two staircases, a dedicated office area and allocated parking immediately adjacent to the property, the home combines space, versatility and modern design. Set within a secure gated development with manicured residents' gardens and CCTV, this unique property blends original schoolhouse character with contemporary finishes. Vast windows, soaring ceilings and beautiful natural light create a dramatic sense of volume, while the home remains wonderfully cool during the summer months. The impressive open-plan reception boasts over 4-metre ceilings, exposed beams, a bespoke birch-ply kitchen with Smeg appliances, and a striking glass mezzanine. The principal bedroom features bespoke fitted wardrobes and dressing space, complemented by a luxurious bathroom across the hall. With excellent storage throughout, flexible living space and an unbeatable combination of architectural character and functionality, this is a truly rare home.

Council tax band D EPC rating C (74)

Features

- Three double bedrooms plus office space
- Two bathrooms
- Two private entrances
- Gated Victorian school conversion
- Over 1700 square feet, split over two floors
- Beautifully maintained residents' gardens
- Allocated off-street parking space
- Victoria and Northern tube lines
- Walking distance to Brixton and Clapham High Streets
- Share of freehold. Chain-free



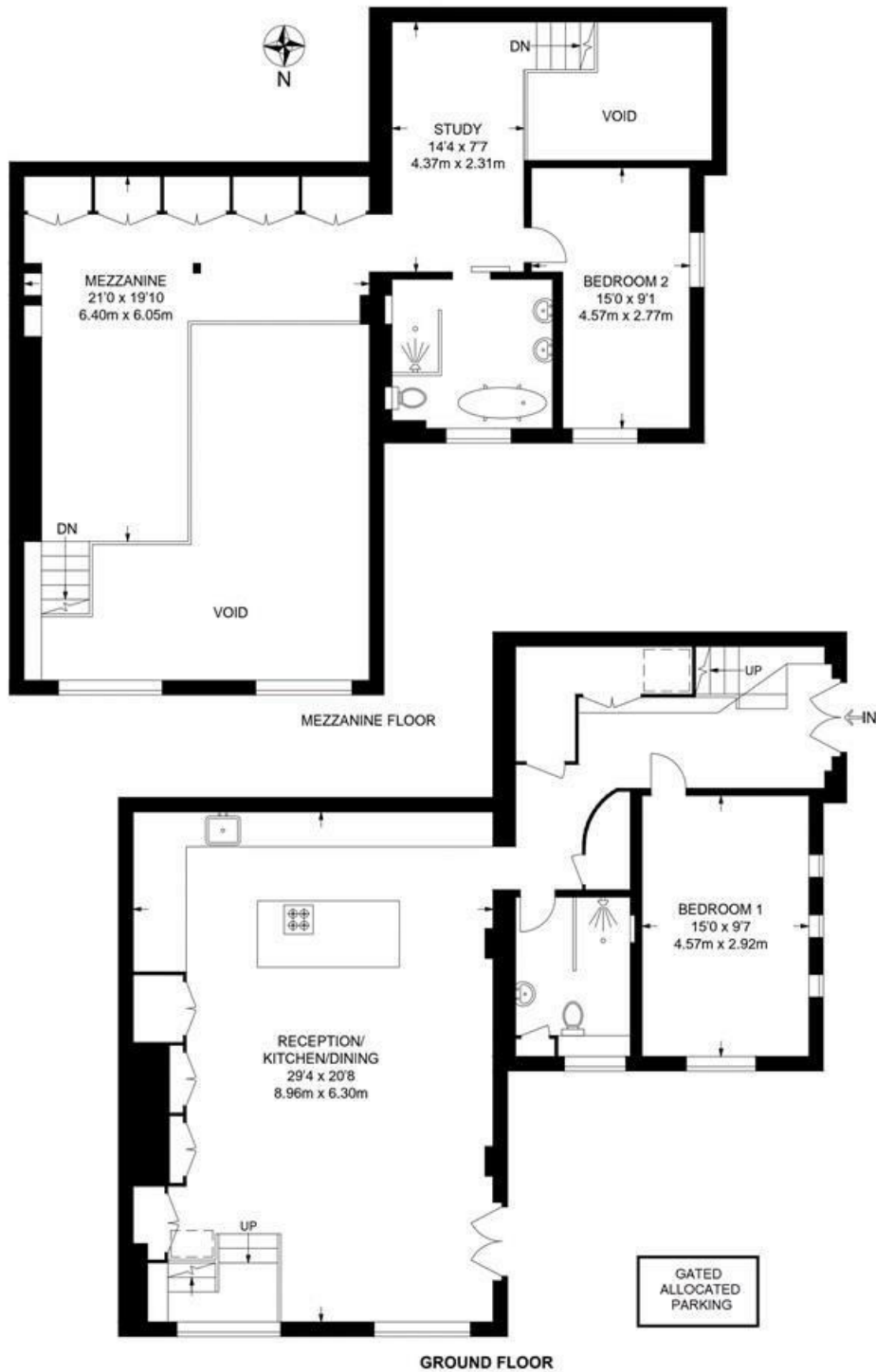




Park Lofts, SW2

2 Bedroom Flat

APPROXIMATE GROSS INTERNAL AREA: 1732 SQ FT / 161 SQ M



While we try our very best, floor plans are produced as a guide only and we take no responsibility for the precise accuracy with which any property is represented.

Park Lofts, Lyham Road, Brixton, SW2

