

Lyham Road, Clapham, SW2

1 bedroom flat to let

£461 Per Week

Not specified

Property Details

Presenting a sleek and contemporary one bedroom apartment in the heart of Clapham. Set across split levels, this beautifully designed home offers an entrance on the first floor leading to a half level with a spacious double bedroom overlooking charming Victorian terraced gardens and a stylish, well-appointed bathroom. Stairs lead up to a bright and generously sized open-plan living area, featuring a comfortable dining space and a modern, fully fitted kitchen perfect for entertaining or relaxing at home. Ideally located close to Clapham Common and Clapham North, and just a short walk from Brixton, this apartment offers excellent transport links and access to vibrant local amenities.

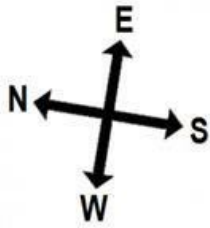
Features

- Newly refurbished
- Victorian
- Open plan kitchen / reception
- One generous sized double bedroom
- Close to Clapham Common
- Around a 16 minute walk to Brixton station

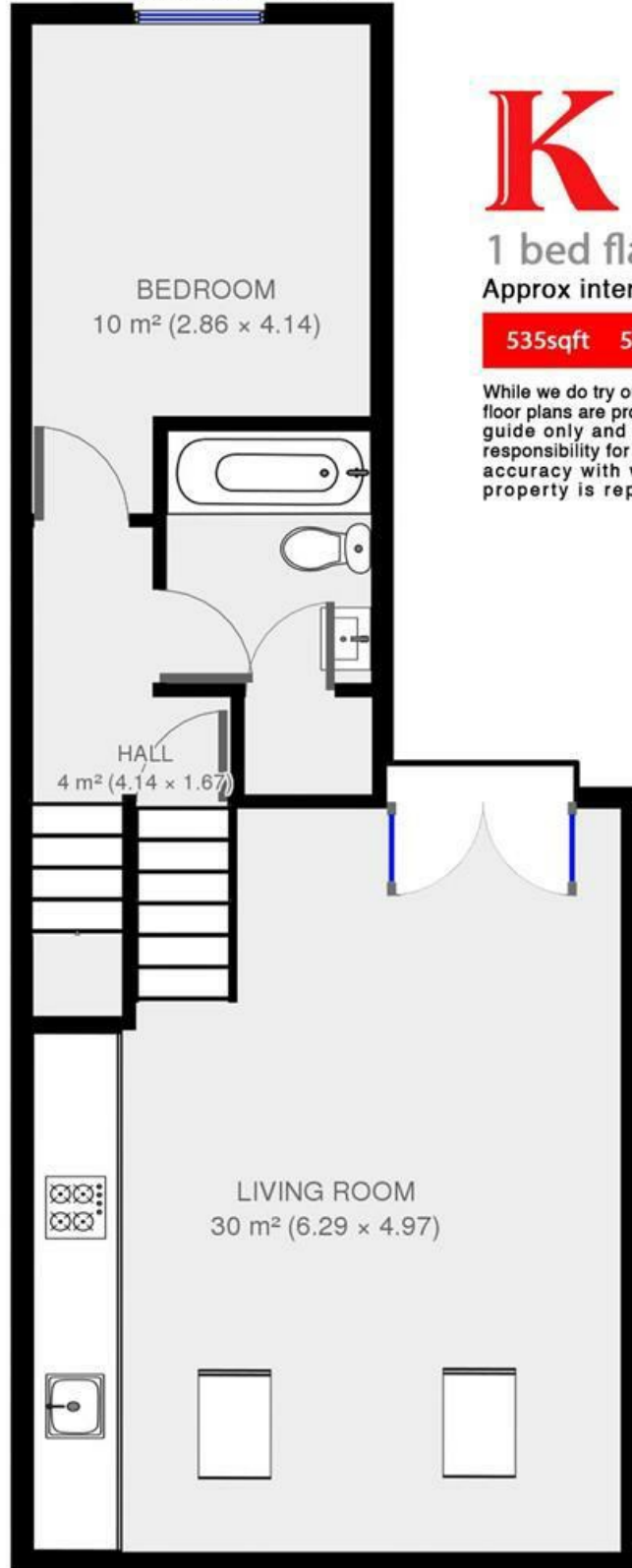
Council tax band C EPC rating D (66)



Lyham Road, Clapham, SW2



Second Floor



BEDROOM
10 m² (2.86 × 4.14)

HALL
4 m² (4.14 × 1.67)

LIVING ROOM
30 m² (6.29 × 4.97)



1 bed flat.

Approx internal area:

535sqft 50sqm

While we do try our very best, floor plans are produced as a guide only and we take no responsibility for the precise accuracy with which any property is represented

Lyham Road

Lyham Road, Clapham, SW2

