



Ræburn Street, Brixton, SW2

2 bedroom flat - conversion to let

£530 Per Week

Unfurnished

Property Details

This stunning newly refurbished and ideally located one double bedroom with study flat is peacefully set back from the road and is arranged over the first floor of an attractive Victorian conversion. The location cannot be understated; moments from the heart of Brixton's attractive amenities and underground station, with London's most cherished outside space only a short walk away.

Features

- Spacious Bedroom
- Study/Office room
- Newly refurbished throughout
- Bright and airy
- Close to Central Brixton
- Close to transport links

Council tax band C EPC rating C (69)



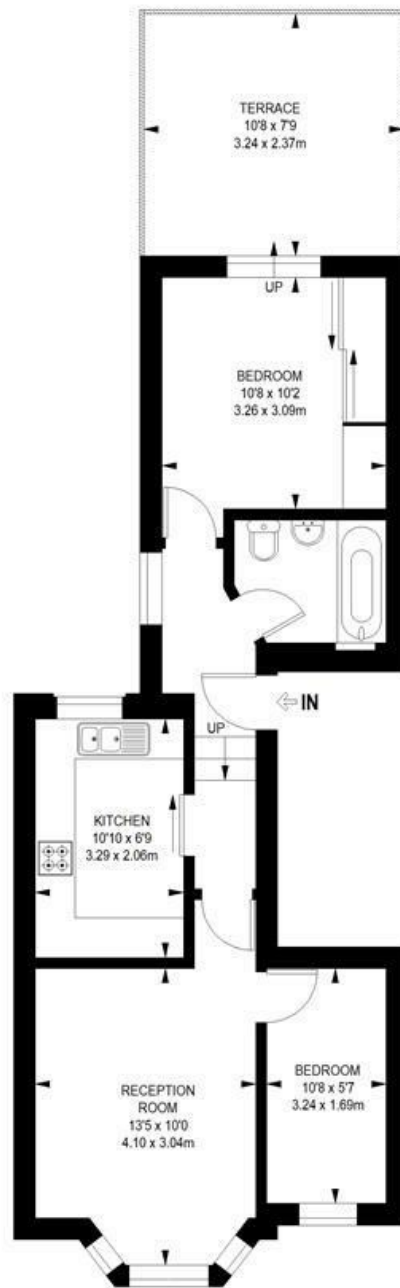
Raeburn Street, Brixton, SW2

Raeburn Street, SW2

2 bedroom flat

APPROXIMATE GROSS INTERNAL AREA WITH STORAGE:

485 SQ FT / 45.06 SQ M



FIRST FLOOR



While we try our very best, floor plans are produced as a guide only and we take no responsibility for the precise accuracy with which any property is represented.

Raeburn Street, Brixton, SW2

