



Thurlow Park Road, Tulse Hill, SE21

2 bedroom flat to let

£461 Per Week

Furnished

Property Details

A lovely, large bright and newly refurbished two bedroom Victorian conversion. The living/dining room is spacious with large bay windows looking out onto the street allowing plenty of sunlight to flow into the space. The separate sleek and modern kitchen is just off the living room. Down the hall are the two generously sized double bedrooms and a family bathroom. Tulse Hill station is around a four minute walk away. Tulse Hill is known for its leafy residential streets, parks and plenty of cafes to spend lazy weekends exploring.

Features

- Victorian
- Light and airy
- Two Bedrooms
- Around an 11 minute walk to Tulse Hill station
- Less than a 10 minute walk to Belair Park
- Separate kitchen and reception
- Furnished

Council tax band C EPC rating C (69)



Thurlow Park Road, Tulse Hill, SE21

Thurlow Park Road

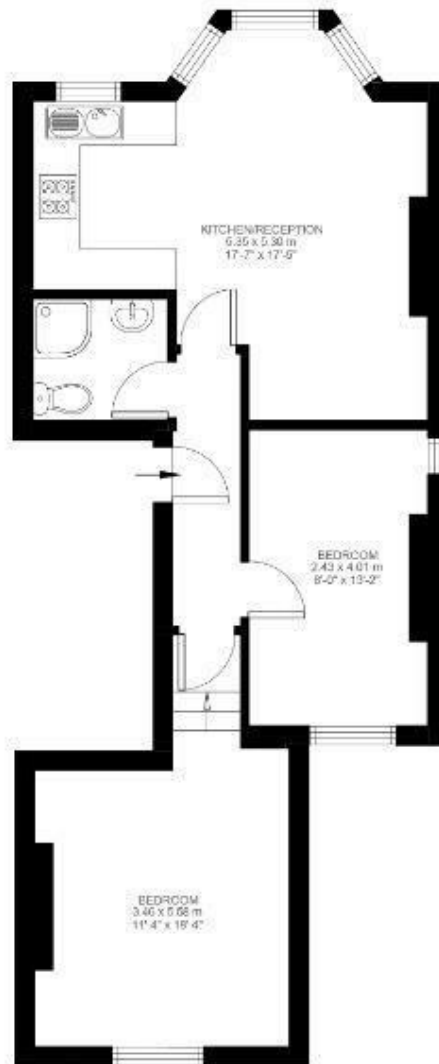


2 Bedroom Flat

Approx internal area:

583 sqft 54 sqm

While we do try our very best, floor plans are produced as a guide only and we take no responsibility for the precise accuracy with which any property is represented.



First Floor



Thurlow Park Road, Tulse Hill, SE21

