**Howletts Road, Herne Hill, SE24**

2 bedroom flat to let

£507 Per Week

Furnished

Property Details

A charming two double bedroom middle floor flat located in walking distance for the wonderful greenery of Brockwell Park. The flat has a spacious open plan kitchen/living room with hardwood flooring and three large sash windows allowing a vast amount of natural light into the room. The kitchen is fully integrated and includes granite worktops. There are also two double bedrooms and a modern bathroom. The property benefits from a lovely communal garden. The flat is only a short walk to three different train stations linking you to London Bridge in under 15 Minutes. The Saturday Market in Herne Hill is a 5-minute walk away and you will find many pubs and restaurants dotted along the route to Brixton, where you will never run out of evening entertainment, shows, and shopping as well as a culinary mecca of cuisines from around the globe.

Features

- Communal gardens
- Bright and airy throughout
- Close to transport links
- Close to Brockwell Park
- 2 Double bedrooms

Council tax band C EPC rating E (47)





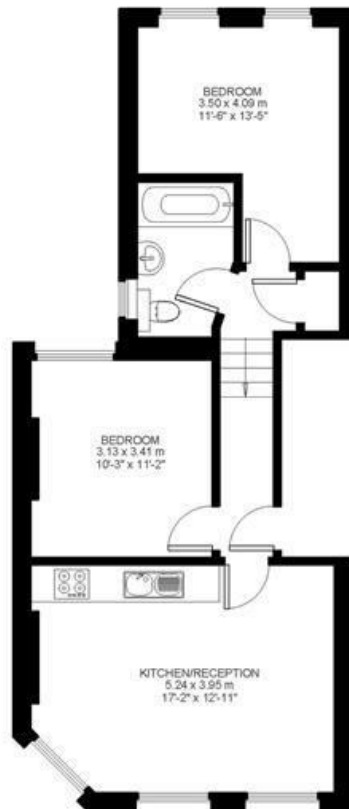
Howletts Road

2 Bed flat

Approx internal area:

600 sqft 56 sqm

While we do try our very best, floor plans are produced as a guide only and we take no responsibility for the precise accuracy with which any property is represented



First Floor



Howletts Road, Herne Hill, SE24

