

**New Park Road, Brixton, SW2****£265,000**

0 bedroom flat - studio for sale

Property Details

A beautifully finished studio apartment within this brand new development, located on a popular road just off vibrant Brixton Hill, with fantastic transport links into central London just moments away. This lovely studio apartment boasts its own entrance, a sleek kitchen with fully integrated appliances, a spacious bedroom area with built-in wardrobes and a luxurious separate bathroom. Each property benefits from a 10-year Premier Guarantee warranty and the development will appeal to a wide range of purchasers, from owner-occupiers, buy-to-let investors and first-time buyers alike.

Features

- Chain-free
- Own front door
- Bright and airy throughout
- Help to buy
- 10 year building guarantee

Council tax band EPC rating (null)



New Park Road, Brixton, SW2

K

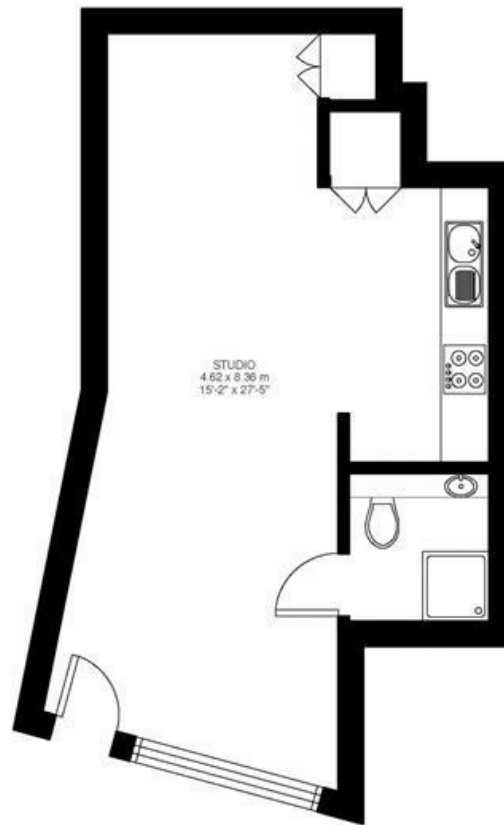
Studio

Approx internal area:

402 sqft 37 sqm

While we do try our very best, floor plans are produced as a guide only and we take no responsibility for the precise accuracy with which any property is represented

New Park Road



Ground Floor

New Park Road, Brixton, SW2

