



**Trinity Rise, Herne Hill, SW2**

**£550,000**

2 bedroom flat - conversion for sale

## Property Details

A spacious split-level, two double bedroom, two bathroom flat, with over 900 square feet of internal living space nestled within an attractive Edwardian terrace on a popular residential road which runs parallel to Brockwell Park. The amenities and transport links in Herne Hill, Tulse Hill and Brixton are all within easy reach. The apartment comprises a separate reception room with ample room to relax and entertain, a modern kitchen, two comfortable double bedrooms and two beautifully finished bathrooms. The bedrooms are both fantastic sizes, separated on different floors, making the property an ideal investment for anyone looking to rent out a room or share with friends. The property is tastefully presented throughout, a beautiful home ready for a purchaser to move in, hassle-free, and stamp their own mark over time.

## Features

- Two double bedrooms
- Two bathrooms
- Edwardian conversion
- Split over various levels
- Over 900 square feet of internal living space
- Bright and airy atmosphere throughout
- Popular residential street running parallel to Brockwell Park

Council tax band D

EPC rating D (56)





Trinity Rise, Herne Hill, SW2



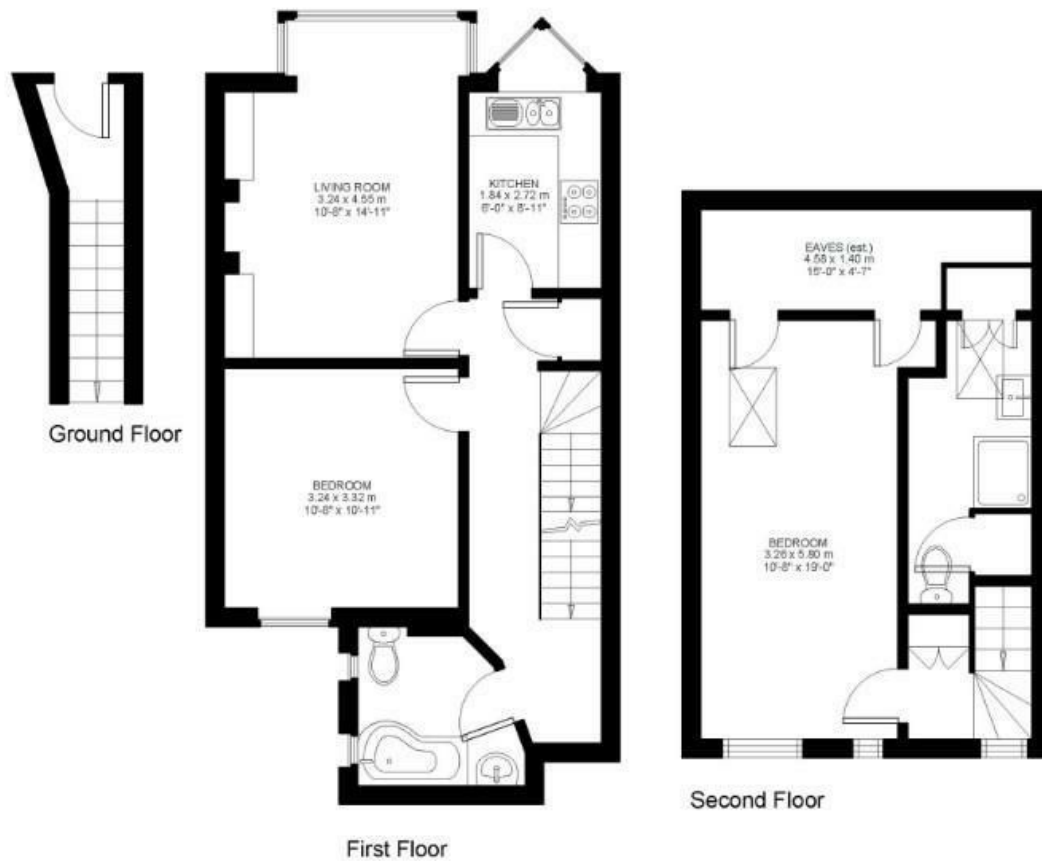
## 2 Bed flat

Approx internal area:

**919 sqft 85 sqm**

While we do try our very best, floor plans are produced as a guide only and we take no responsibility for the precise accuracy with which any property is represented

## Trinity Rise





Trinity Rise, Herne Hill, SW2

