



Mayall Road, Herne Hill, SE24

4 bedroom house - terraced for sale

£865,000

Freehold

Property Details

A characterful four/five bedroom Victorian terraced house with an East-facing garden on Mayall Road, conveniently located between Herne Hill (8-minute walk) and Brixton (8-minute walk). The property comprises a double aspect reception and dining room, four double bedrooms, a country-style kitchen diner, a modern bathroom with a separate WC, a West-facing patio garden, and the benefit of a large cellar – an extremely versatile space that could be used in various ways to suit the purchaser's individual requirements, such as children's playroom, study, or storage etc. Freehold. Chain Free.

Features

- Four double bedrooms
- Victorian terrace house
- Characterful features
- Development potential
- Sought-after location
- Close to Brockwell Park
- Chain-free

Council tax band E EPC rating E (40)





Mayall Road, Herne Hill, SE24

K

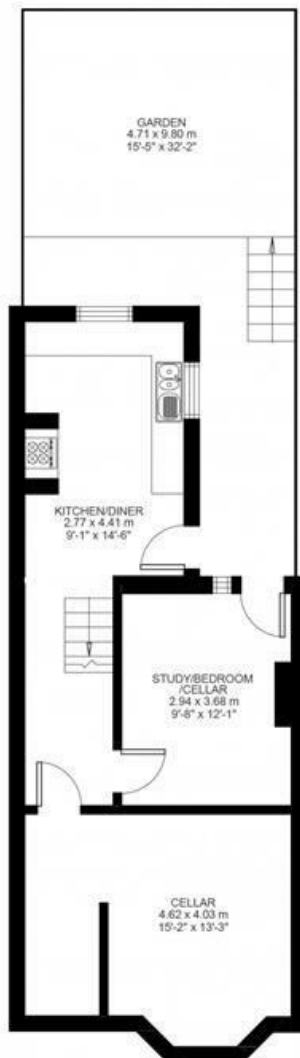
5 Bed House

Approx internal area:

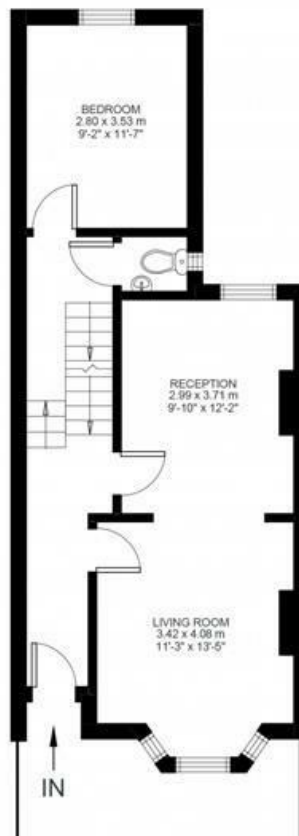
1551 sqft 144 sqm

While we do try our very best, floor plans are produced as a guide only and we take no responsibility for the precise accuracy with which any property is represented

Mayall Road



Lower Ground Floor



Ground Floor



First Floor



Mayall Road, Herne Hill, SE24

