



Herne Hill Road, Herne Hill, SE24

1 bedroom flat - conversion for sale

£385,000

Share of Freehold

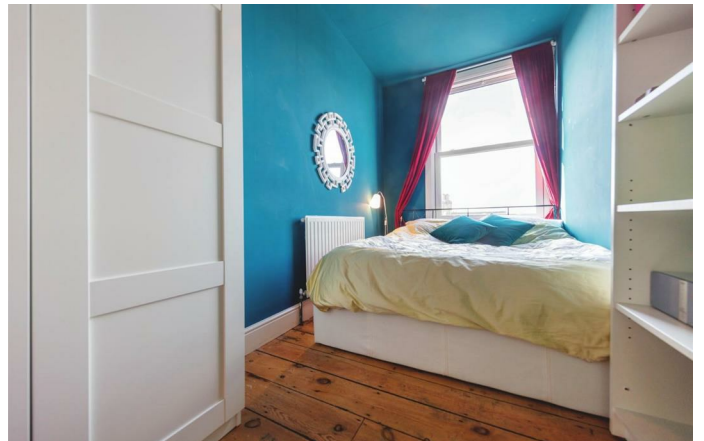
Property Details

A charming split level one double bedroom top floor flat tucked away off Herne Hill Road. It is a 3-minute walk from Loughborough Junction Station which serves central London in under 10 minutes, right outside Ruskin Park and easy walking distance to Herne Hill, Brixton and Denmark Hill. The property comprises a living area with wooden flooring, a modern separate kitchen, a double bedroom and bathroom. The flat has historical planning approved to convert into the substantial loft space. Chain free. Share of freehold.

Features

- Victorian conversion
- One double bedroom
- Characterful features
- Close to the park
- Development potential
- Planning permission granted
- Substantial loft space
- Share of freehold

Council tax band B EPC rating D (61)



Herne Hill Road, Herne Hill, SE24

K

Herne Hill Road

1 Bed flat

Approx internal area:

458 sqft 43 sqm

While we do try our very best, floor plans are produced as a guide only and we take no responsibility for the precise accuracy with which any property is represented



Herne Hill Road, Herne Hill, SE24

