

Kellett Road, Brixton, SW2

£720,000

3 bedroom flat - conversion for sale

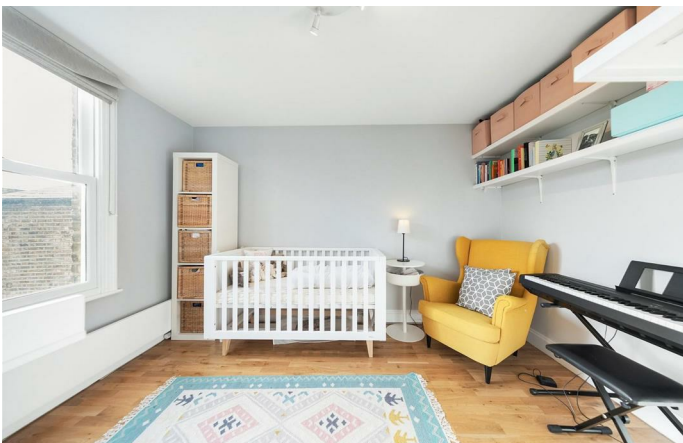
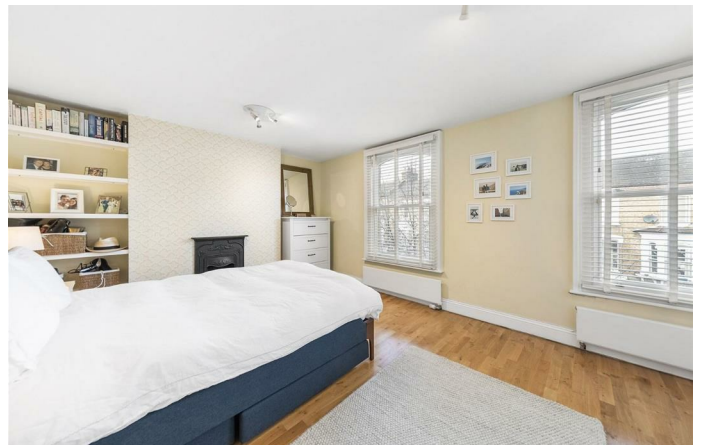
Property Details

A central three double bedroom split-level apartment on a sought-after residential street within close proximity to Brixton High Street, Brockwell Park and Herne Hill. This penthouse apartment boasts 912 square feet of internal living space which is beautifully presented with a light and airy atmosphere throughout. On the second floor sit the three double bedrooms: the master is extremely spacious and spans the entire width of the property. The second and third bedrooms are also comfortable doubles, a rare find within a converted Victorian flat, and have a wide range of potential uses, such as guest rooms, dressing rooms, home office or extra bedrooms to rent out for some additional income. The family bathroom is modern and inviting. A staircase meanders up through the property to the wonderfully bright open plan reception room. Large skylights allow natural light to flood the room, as does the wall of large pane windows and double doors that allow the living space to flow seamlessly onto the stunning South-facing roof terrace. The terrace offers fantastic views over the neighbouring roof tops and out across South London. This living room will be used on a regular basis: a stunning space, perfect for relaxing, dining and entertaining. The kitchen is contemporary and has all you need in terms of mod cons.

Features

- Three double bedrooms
- Victorian conversion
- Split-level top floor apartment
- Bright and airy throughout
- South-facing roof terrace
- Over 900 square feet of internal living space
- Central location with a few minutes walk to Brixton tube station
- Brockwell Park is moments away

Council tax band C EPC rating C (76)



Kellett Road

K

3 Bed flat

Approx internal area:

912 sqft 85 sqm

While we do try our very best, floor plans are produced as a guide only and we take no responsibility for the precise accuracy with which any property is represented



Kellett Road, Brixton, SW2

