



Shakespeare Road, Herne Hill, SE24

2 bedroom flat for sale

£475,000

Share of Freehold

Property Details

This lovely Victorian flat occupies the ground floor of one of the prettiest houses in Poets Corner. The property comprises a charming open plan reception with wooden flooring, two bedrooms and a modern bathroom with a warm inviting feel. The pièce de résistance has to be the landscaped front garden, a perfect entertaining space to enjoy the warmer months. The apartment also has the added advantage of an allocated parking space outside the front of the building. Shakespeare Road is located in a desirable residential pocket of roads between Herne Hill (6 minutes) and Brixton (10 minutes).

Features

- Two double bedrooms
- Victorian conversion
- Characterful features
- Sought-after location
- Allocated off street parking space
- Private front garden
- Chain-free
- Share of freehold

Council tax band C

EPC rating D (66)



Shakespeare Road, Herne Hill, SE24



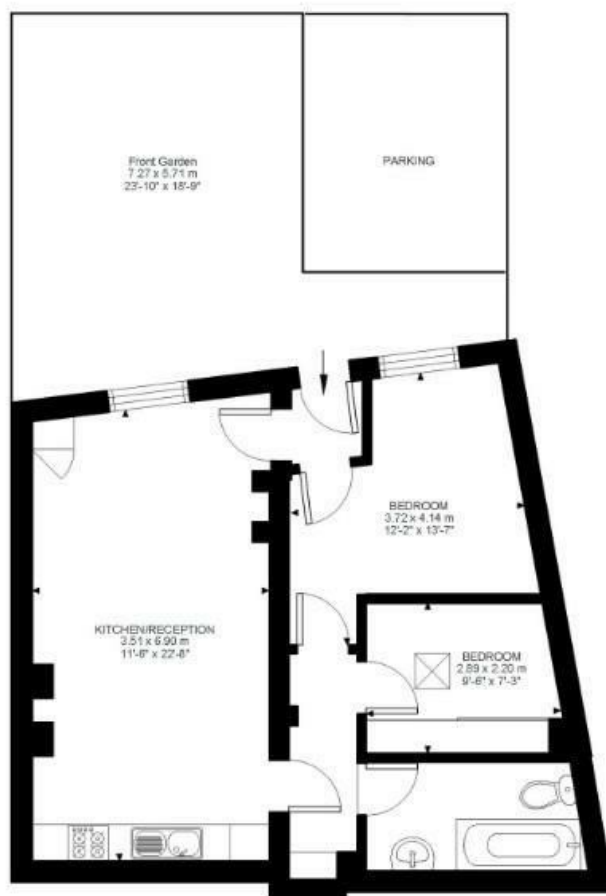
2 Bed flat

Approx internal area:

571 sqft 53 sqm

While we do try our very best, floor plans are produced as a guide only and we take no responsibility for the precise accuracy with which any property is represented

Shakespeare Road



Ground Floor



Shakespeare Road, Herne Hill, SE24

