



**Winterwell Road, Brixton, SW2**

5 bedroom house - terraced for sale

**£1,400,000**

Freehold

## Property Details

A majestic five double bedroom period townhouse, located on a quiet street between the amenities in Brixton (ten minutes) and Clapham (12 minutes). Winterwell Road is equidistant to both sought-after locations and will appeal to purchasers who are contemplating moving to the two areas. This highly desirable road has a hidden secret; stunning 70 foot gardens that are larger than average for the Brixton area. This particular home is on the South facing side of the road and this wonderful selling point allows the house to stand out from similar sized houses in the area with smaller gardens.

## Features

- Five double bedrooms
- Victorian freehold house
- Characterful features
- Highly desirable road
- Fantastic dimensions
- South-facing 67 foot private garden
- Within walking distance to a range of excellent schools
- Walking distance to the Northern and Victoria tube lines
- Chain-free

Council tax band F    EPC rating E (42)





Winterwell Road, Brixton, SW2

**K**

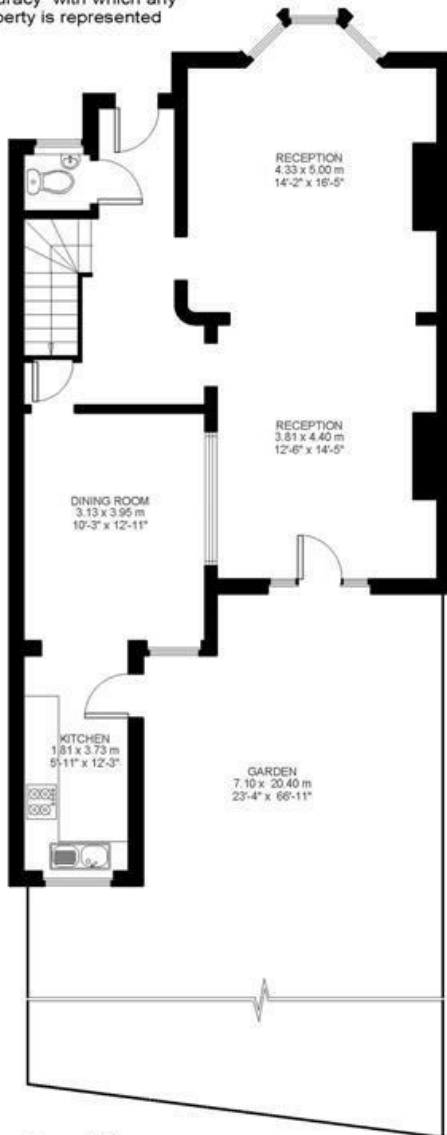
5 Bed house  
Approx internal area:

2002 sqft 186 sqm

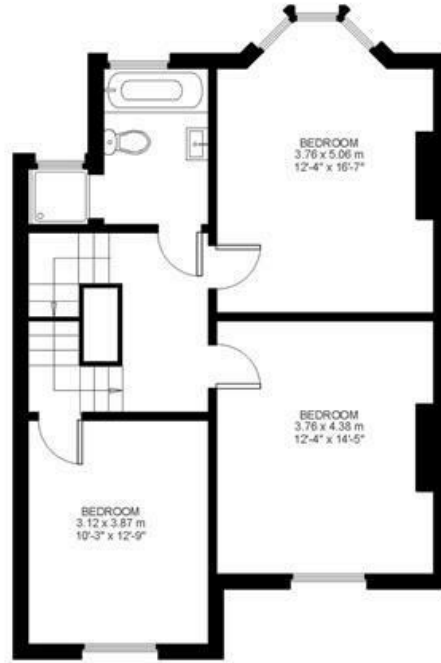
While we do try our very best, floor plans are produced as a guide only and we take no responsibility for the precise accuracy with which any property is represented



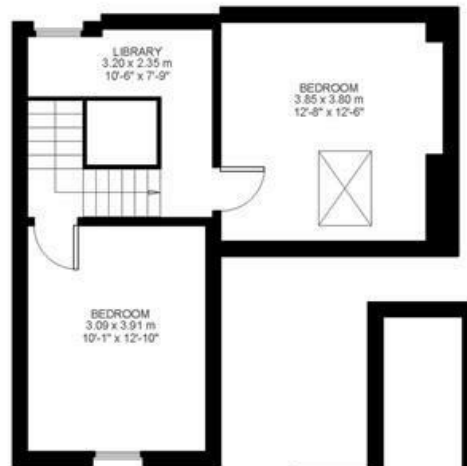
Winterwell Road



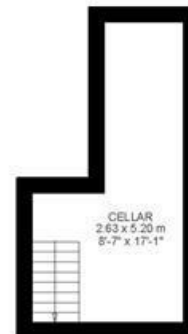
Ground Floor



First Floor



Second Floor



Basement

Winterwell Road, Brixton, SW2

