

## Blenheim Gardens, Brixton, SW2

4 bedroom house - terraced for sale

£1,100,000

Freehold

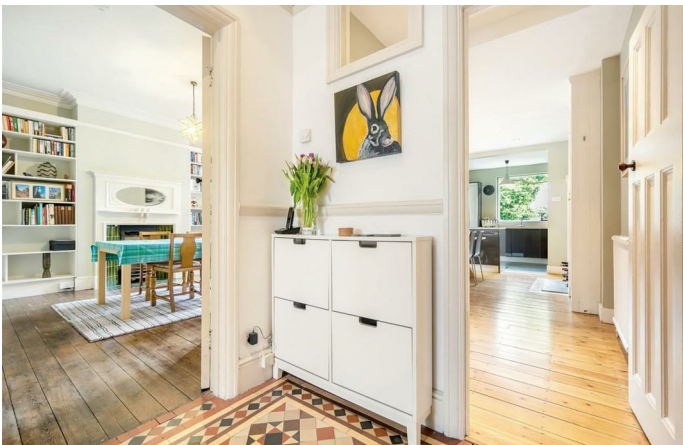
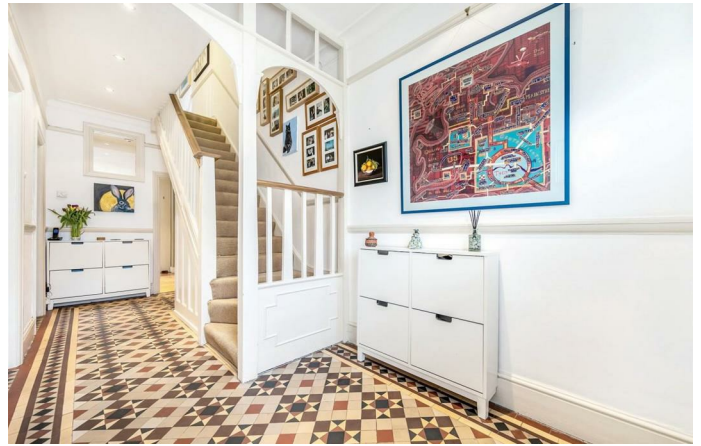
### Property Details

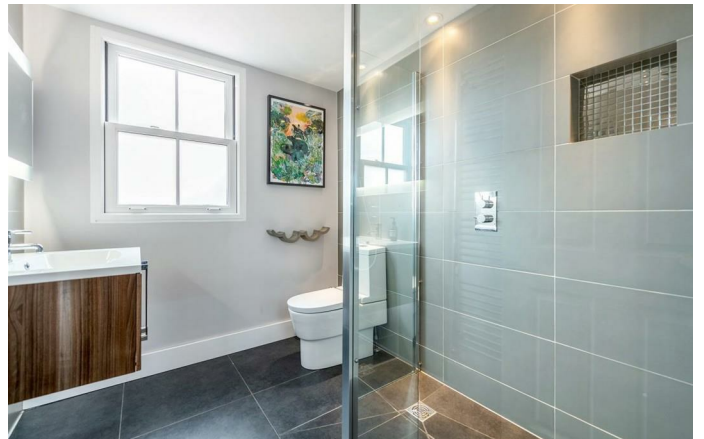
A characterful four double bedroom Edwardian house that has been lovingly extended and cared for by its current owners. This property boasts nearly 190 square metres of living space, making it a cut above the other period houses on offer within the area in terms of space and finish. Blenheim Gardens is a quiet and peaceful residential street, located just off vibrant and trendy Brixton Hill, a ten-minute walk to the centre of Brixton and all that the area has to offer. The property comprises four double bedrooms, two bathrooms, two reception rooms and a stunning eat-in kitchen diner.

### Features

- Four double bedrooms
- Two bathrooms
- Period freehold house
- Characterful features
- Over 2000 square feet of internal living space
- Potential to extend (STPP)
- Private garden

Council tax band E    EPC rating C (70)





# Blenheim Gardens

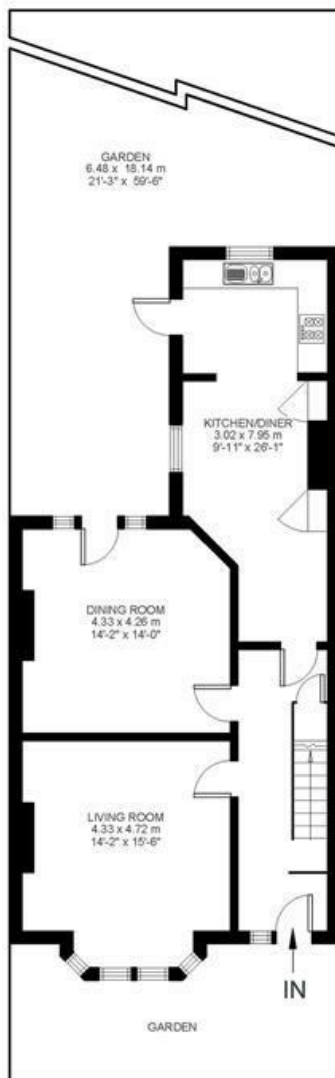
# K

4 Bed house

Approx internal area:

**2024 sqft 188 sqm**

While we do try our very best, floor plans are produced as a guide only and we take no responsibility for the precise accuracy with which any property is represented



Ground Floor



First Floor



Second Floor



Blenheim Gardens, Brixton, SW2

