

Blenheim Gardens, Brixton, SW2

4 bedroom house - terraced for sale

£1,175,000

Freehold

Property Details

A four double bedroom Edwardian house that has been lovingly extended and cared for by its current owners, to an exceptional standard. This property boasts 200 square metres of living space, making it a cut above the other period houses on offer within the area in terms of space and finish. Blenheim Gardens is a quiet and peaceful residential street, located just off vibrant and trendy Brixton Hill, a ten-minute walk to the centre of Brixton and all that the area has to offer. The property comprises four double bedrooms, three bathrooms, two reception rooms and a stunning eat-in kitchen diner.

Features

- Four double bedrooms
- Three bathrooms
- Edwardian terrace house
- Contemporary kitchen with integrated appliances
- Bright and airy throughout
- Close to Brockwell Park
- 2150 square feet of internal living space
- Private garden
- Close to transport links

Council tax band E EPC rating C (70)







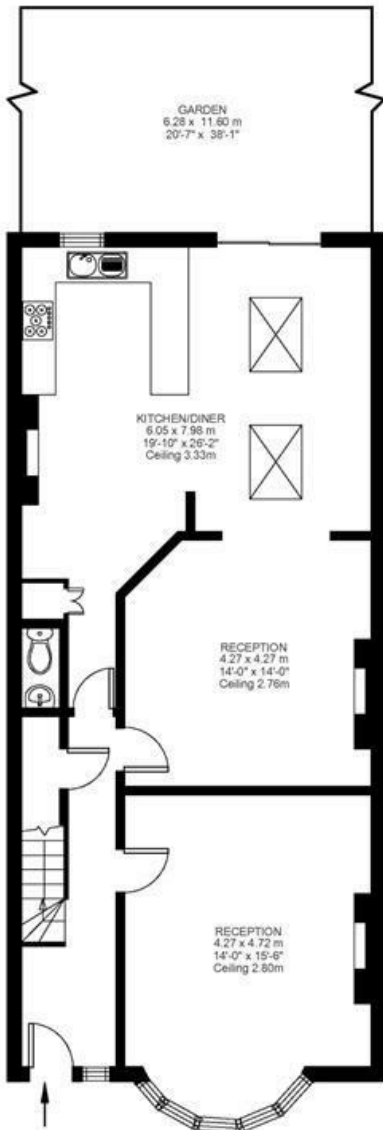
4 Bed house

Approx internal area:

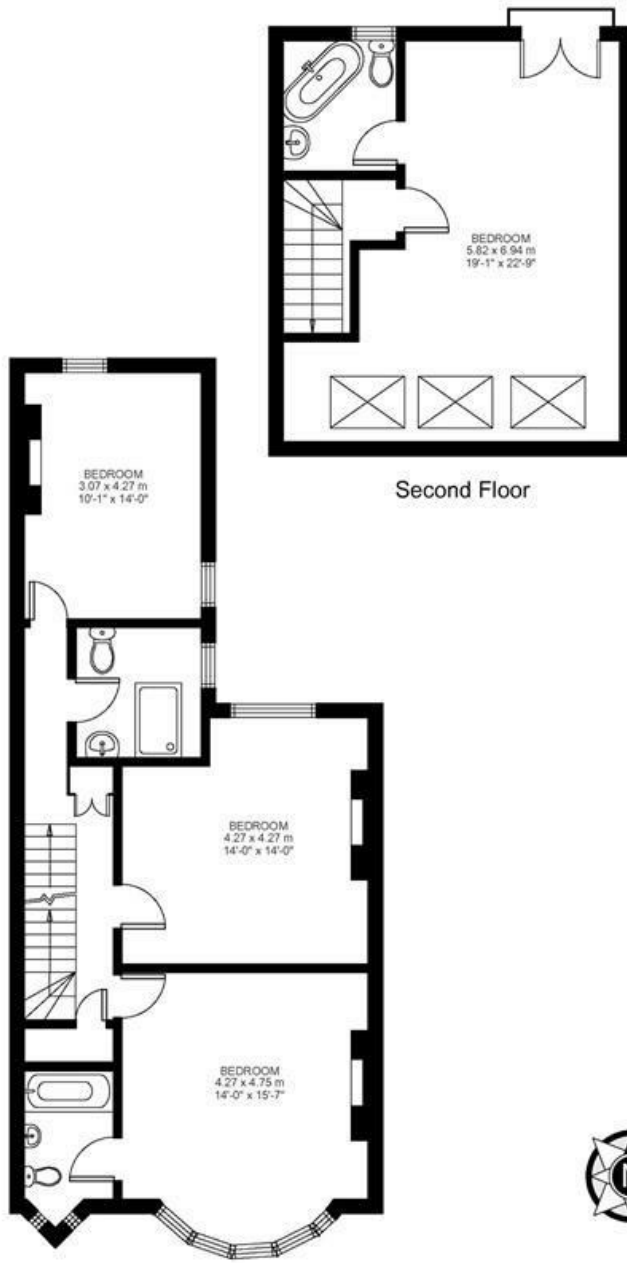
2148 sqft 200 sqm

While we do try our very best, floor plans are produced as a guide only and we take no responsibility for the precise accuracy with which any property is represented

Blenheim Gardens



Ground Floor



Second Floor

First Floor



Blenheim Gardens, Brixton, SW2

