



**Fairmount Road, Brixton, SW2**

5 bedroom house - terraced for sale

**£1,250,000**

Freehold

## Property Details

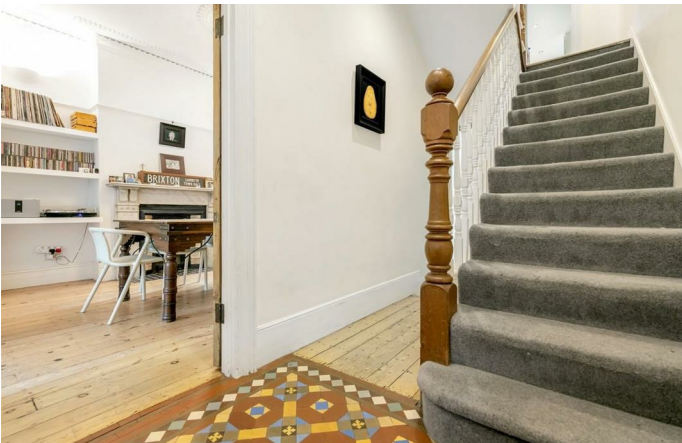
A beautiful five double bedroom Victorian terraced house, located a ten-minute stroll from Brixton tube station. Brockwell Park is close-by and fifteen minutes walk through the park brings you to Herne Hill. With nearly 2000 square feet of living space on offer, five large bedrooms and a secluded garden to match, it is hard to remind yourself that you are in the heart of Brixton, with easy access into Central London. Situated on Fairmount Road, a popular street which benefits from a quiet setting as the road wraps around onto Beechdale Road resulting in minimal through traffic. Freehold.

## Features

- Five double bedrooms
- Three bathrooms
- Victorian terraced house
- Characterful features
- Potential to extend
- Cellar
- Private garden
- Highly desirable road

Council tax band F    EPC rating E (41)









Fairmount Road, Brixton, SW2

# Fairmount Road

# K

5 Bed house

Approx internal area:

**2055 sqft 191 sqm**

While we do try our very best, floor plans are produced as a guide only and we take no responsibility for the precise accuracy with which any property is represented





Fairmount Road, Brixton, SW2

