

Helix Gardens, Brixton, SW2

3 bedroom house - end terrace for sale

£1,400,000

Freehold

Property Details

A majestic three double bedroom Victorian end of terrace townhouse, which is set back from Josephine Avenue behind long, secret gardens. The property comprises a double aspect lounge with square bay window and packed full of features, a kitchen diner and a private front and rear garden. On the upper floors sit three double bedrooms and two bathrooms. Subject to permission there is the opportunity to increase the footprint by altering the un-converted loft. The property is a ten minute walk to Brixton tube. Brockwell Park is a short stroll and Herne Hill station is thirteen minutes away.

Features

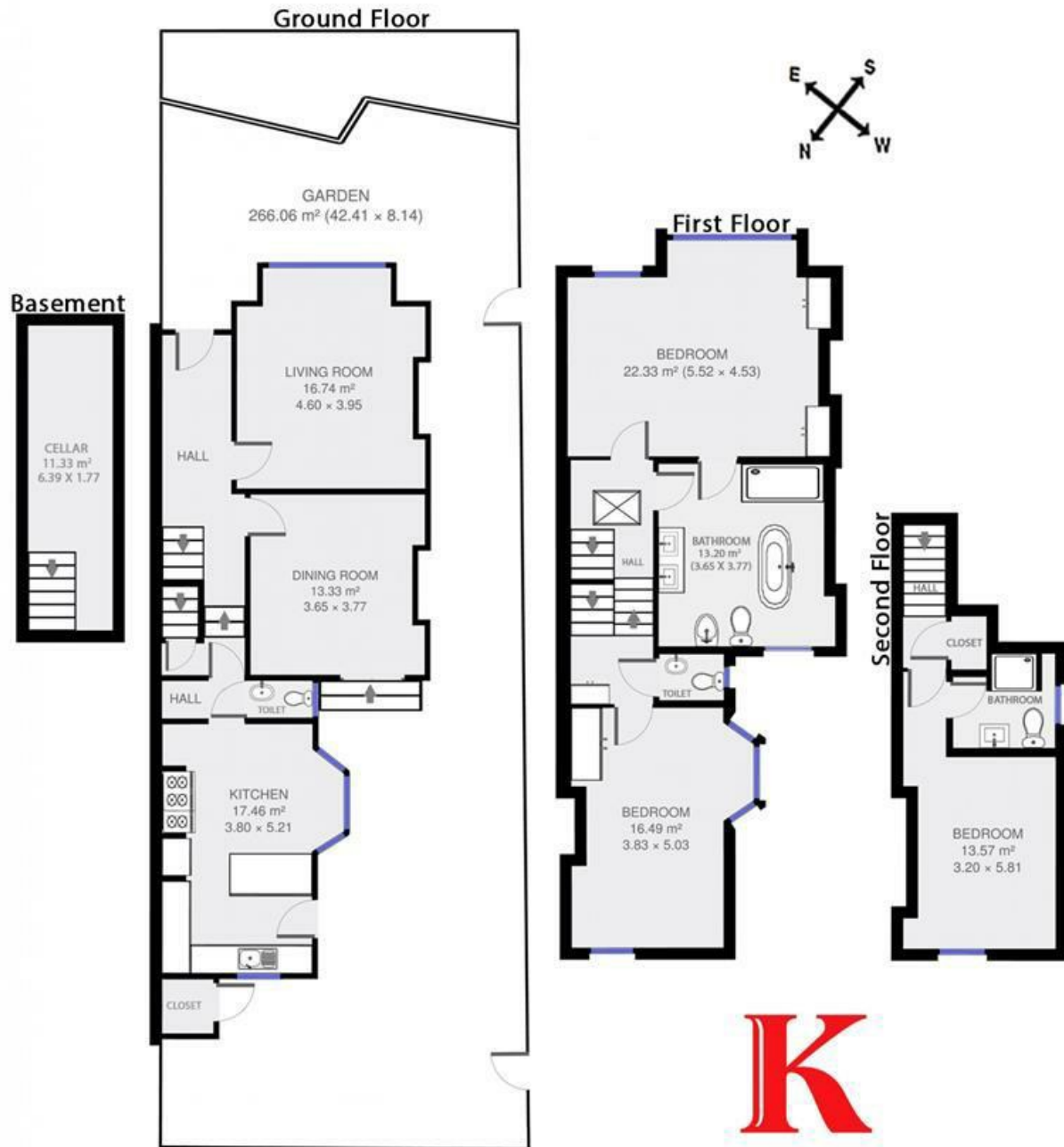
- Three double bedrooms
- Two bathrooms
- Victorian end of terrace house
- Bright and airy throughout
- Characterful features
- Substantial loft space
- Highly desirable road
- Private front and rear garden
- Close to the Brockwell Park

Council tax band F EPC rating E (42)





Helix Gardens



3 Bed House.

Approx internal area:

1777 sqft 165 sqm

While we do try our very best, floor plans are produced as a guide only and we take no responsibility for the precise accuracy with which any property is represented

Helix Gardens, Brixton, SW2

