

Beechdale Road, Brixton, SW2

4 bedroom house for sale

£1,200,000

Freehold

Property Details

An elegant three-bedroom Victorian family home, set over three floors and full of striking period features which include; period fireplaces, coving, large sash windows and Victorian tiling in the hallways. With over 1800 square feet of internal space, this handsome terraced house has three double bedrooms, two substantial living areas and loft space which could be extended. Located on a highly sought-after residential road, Beechdale Road is an attractive and peaceful street, perfectly located just off vibrant and trendy Brixton Hill, a ten-minute walk to the centre of Brixton.

Features

- Three/Four double bedrooms
- Two bathrooms
- Victorian
- Chain free
- Private garden
- Characterful features
- Highly desirable road
- Freehold

Council tax band F EPC rating E (53)



Beechdale Road, Brixton, SW2

K

Beechdale Road

3 Bed House

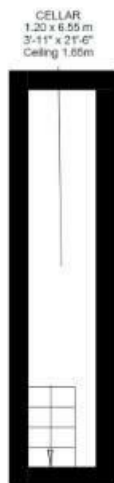
Approx internal area:

1849 sqft 172 sqm

While we do try our very best, floor plans are produced as a guide only and we take no responsibility for the precise accuracy with which any property is represented



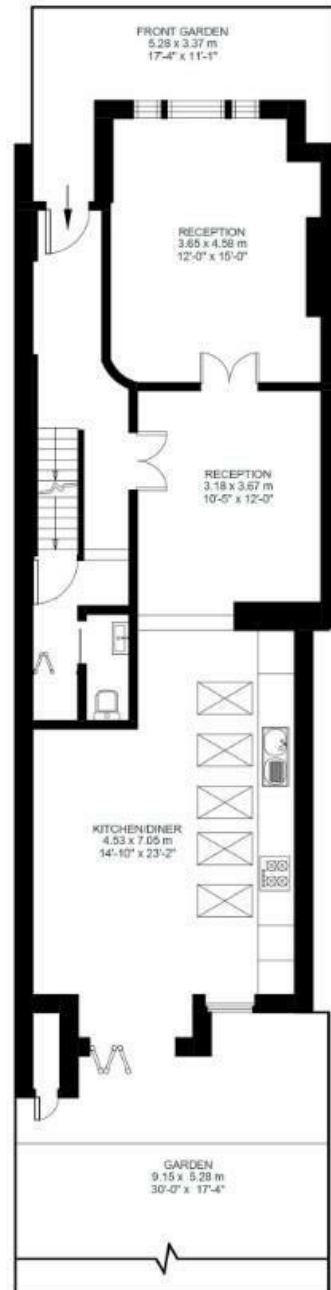
Second Floor



Lower Ground Floor



First Floor



Ground Floor

Beechdale Road, Brixton, SW2

