



Canford Road, Clapham, SW11

4 bedroom house - terraced for sale

£1,199,950

Freehold

Property Details

A fantastic opportunity to extend and stamp your own mark on this attractive period terraced house nestled on a popular residential street between Clapham and Wandsworth Commons. Canford Road is a quiet road which feeds directly off Clapham Common West Side and runs parallel to Northcote Road. The property comprises two reception rooms, a kitchen tucked away at the back of the building, four comfortable double bedrooms, two bathrooms, a cellar and a private West facing garden. Canford Road has the beautiful, leafy expanse of Clapham Common located at the end of the road and it is a ten-minute stroll to Clapham South tube station (Northern Line) and a similar distance to Clapham Junction station (overground). Purchasers will have the best of both worlds: a peaceful, tree-lined street and easy access to vibrant Northcote Road and Clapham High Street, coupled with fast connections to the rest of London.

Council tax band F EPC rating D (67)

Features

- Four double bedrooms
- Period terrace house
- Development potential
- West-facing private garden
- Over 1600 square feet of internal living space
- Close proximity to Clapham Common
- Within walking distance to the Northern Line and Clapham Junction
- Freehold



Canford Road, Clapham, SW11

K

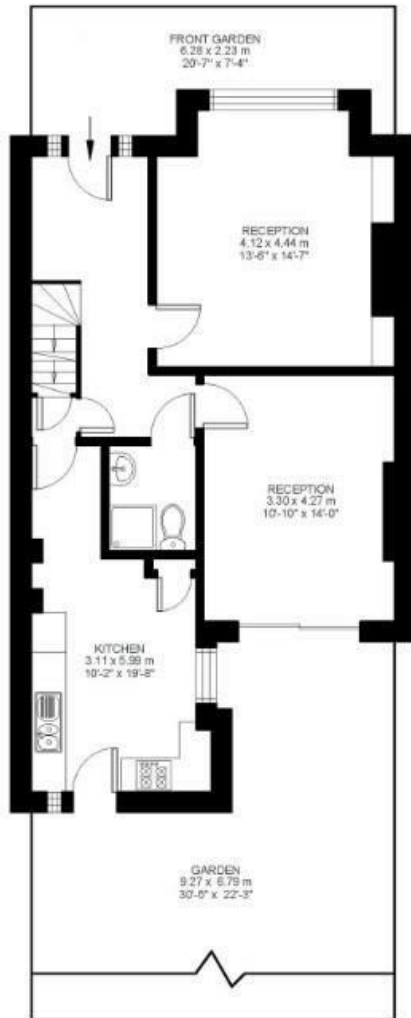
4 Bed house

Approx internal area:

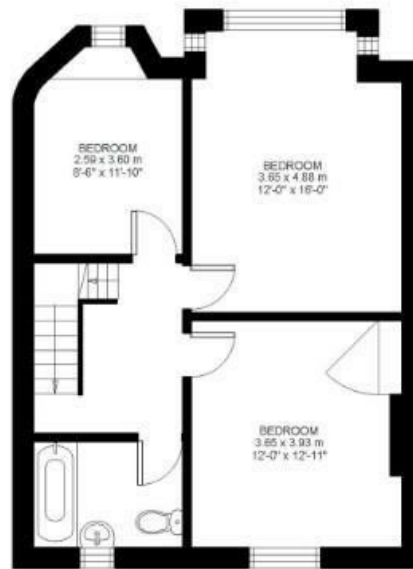
1630 sqft 151 sqm

While we do try our very best, floor plans are produced as a guide only and we take no responsibility for the precise accuracy with which any property is represented

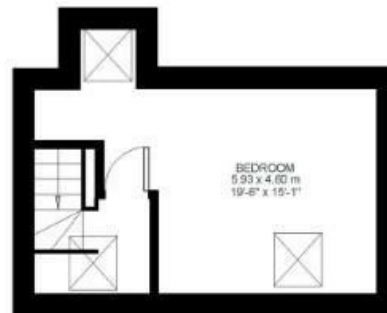
Canford Road



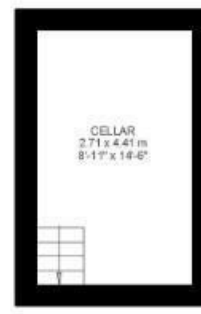
Ground Floor



First Floor



Second Floor



Lower Ground Floor



Canford Road, Clapham, SW11

