



**Talma Road, Brixton, SW2**

3 bedroom house - terraced for sale

**£1,025,000**

Freehold

## Property Details

A three double bedroom Victorian house located a five minute walk from the heart of Brixton. The property includes: a master bedroom running the width of the building, two further double bedrooms and a spacious family bathroom on the first floor. On the ground floor you have an attractive entrance hall with oak flooring. From the hallway you enter a stylish through-lounge with access through to the extended kitchen diner and onto a private garden. This property has been lovingly modernised and extended by its present owners whilst maintaining the charm of this period. Freehold.

## Features

- Three double bedrooms
- Victorian terrace house
- Beautifully finished throughout
- Downstairs W.C
- Potential to extend (STPP)
- Sought-after location
- Close to transport links
- Close to Brockwell Park

Council tax band E    EPC rating D (58)





# Talma Road



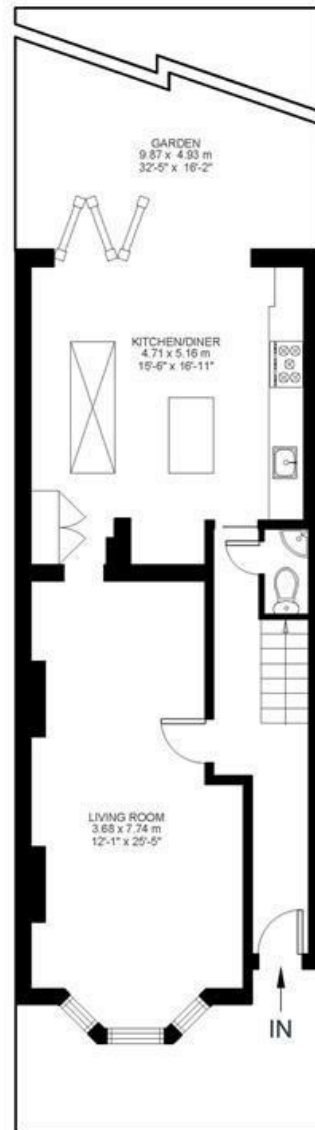
3 Bed house  
 Approx internal area:

**1188 sqft 110 sqm**

While we do try our very best, floor plans are produced as a guide only and we take no responsibility for the precise accuracy with which any property is represented



First Floor



Ground Floor



Talma Road, Brixton, SW2

