



Larkhall Lane, Clapham, SW4

£485,000

2 bedroom flat - purpose built for sale

Property Details

A bright and well-proportioned two double bedroom garden flat, on the ground floor of a converted period building on Larkhall Lane. Located a short walk from the amenities within Clapham Old Town and leafy Larkhall Park. This lovely apartment has a fantastic layout and feels instantly liveable, the moment you walk through the door. The spacious open plan reception has ample room to dine and the kitchen has all you need in terms of mod cons and storage. The space flows effortlessly through glass doors and onto a private patio garden, an ideal space to enjoy the warmer months. The two bedrooms are both comfortable double rooms, located at either end of a wide hallway and sharing a sleek and contemporary bathroom, complete with stylish tiling. Clapham High Street with its multitude of restaurants, bars and coffee shops are all within reach and the green open spaces of Clapham Common and Battersea Park are close-by. There are excellent transport links with access to the Victoria and Northern Lines, the London Overground and numerous bus routes to central London. Stockwell, Wandsworth Road, Clapham North and Clapham High Street stations are all a less than a ten-minute walk. Chain-free.

Features

- Two double Bedrooms
- Part modern, part period conversion
- Nearly 700 square feet of internal living space
- Private garden
- Close to Larkhall Park
- Chain-free

Council tax band D EPC rating C (78)



Larkhall Lane

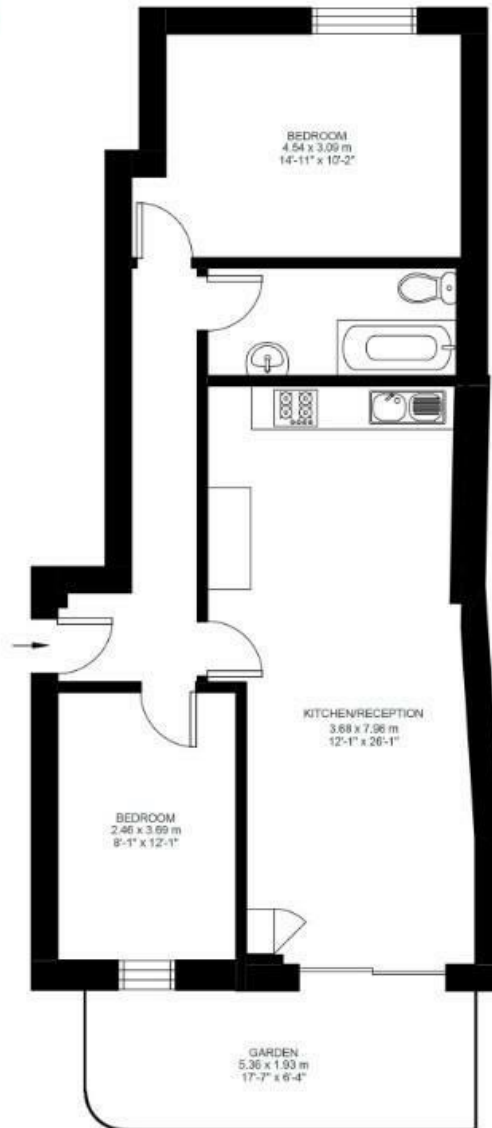
K

2 Bed flat

Approx internal area:

681 sqft 63 sqm

While we do try our very best, floor plans are produced as a guide only and we take no responsibility for the precise accuracy with which any property is represented



Ground Floor



Larkhall Lane, Clapham, SW4

