



Lambert Road, Brixton, SW2

£550,000

2 bedroom flat - conversion for sale

## Property Details

A beautifully presented Victorian maisonette, packed full of character and located on one of Brixton's most popular residential roads. Brixton and Clapham High Streets are accessible within a fifteen-minute walk. With its own front door, two generous double bedrooms, a South-facing private garden, and a sought-after location to boot, this lovely maisonette will tick boxes for a wide range of purchasers. The current owners have really made the most of the versatile layout and the airy atmosphere within the property. The two double bedrooms are both spacious and similar in size, each with a charming feature fireplace and flooded with natural light, sharing a tastefully finished, modern bathroom. The heart of the home is a well-presented reception room to the rear of the property; this fantastic entertaining area boasts ample room in which to dine and relax. Multiple large paned windows and wooden flooring contribute to confirm that this splendid space will be used on a regular basis. The stylish kitchen has all you need in terms of mod-cons, and provides access onto the pretty patio garden. This sunny and secluded spot is the perfect space in which to relax or host guests during the warmer months.

## Features

- Two double bedrooms
- Purpose-built Victorian garden maisonette
- Characterful features
- Nearly 730 square feet of internal living space
- Private South facing secluded garden
- Within walking distance to the Northern and Victoria tube lines

Council tax band

EPC rating D (67)





# K

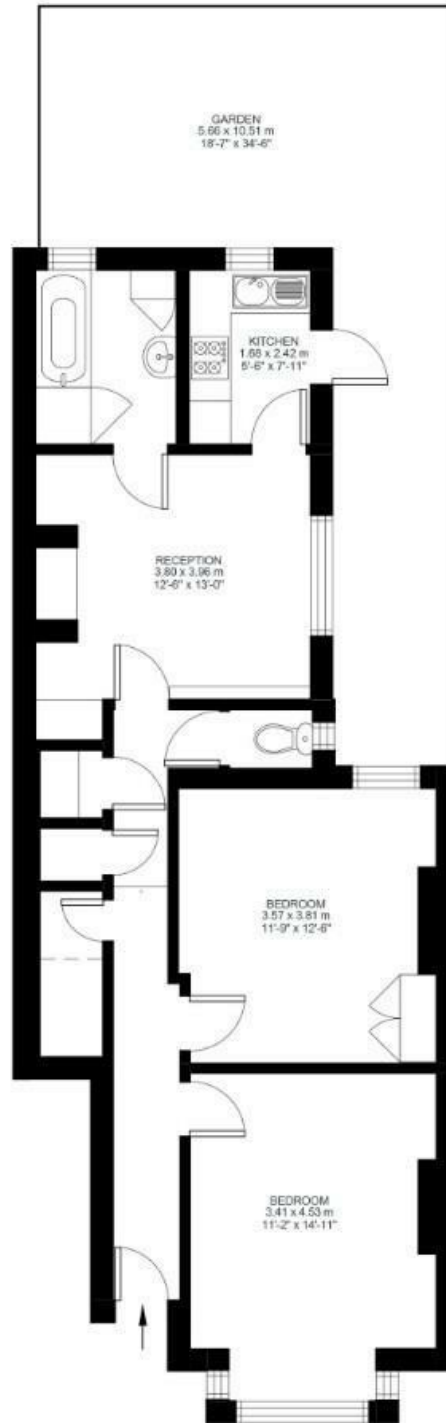
## 2 Bed flat

Approx internal area:

**728 sqft 68 sqm**

While we do try our very best, floor plans are produced as a guide only and we take no responsibility for the precise accuracy with which any property is represented

## Lambert Road



Ground Floor



Lambert Road, Brixton, SW2

