

Shakespeare Road, Herne Hill, SE24

3 bedroom house - terraced for sale

£925,000

Freehold

Property Details

An exceptional Victorian terraced house in Poets Corner. Shakespeare Road is a quaint, tree-lined Victorian road sandwiched between similar roads in this highly sought-after network of streets, between Herne Hill and Brixton. This is a beautifully presented home, a light and airy mix of elegant design and characterful features. Shakespeare Road is situated in the heart of Poets' Corner, a highly desirable residential pocket of roads between Herne Hill and Brixton. Herne Hill station is a six-minute walk and Brixton tube station is a ten-minute stroll. London Bridge is accessible in twenty-four minutes, Canary Wharf in thirty-seven minutes and Victoria within sixteen minutes, door to door. The celebrated Herne Hill establishments are close-by and the restaurants and shops within the lauded Brixton Village, the amenities of the high street and Brixton Station are a ten-minute stroll. The green, open spaces of Brockwell Park are also at the end of the road, along with its iconic 1930's Lido.

Features

- Three double bedrooms
- Victorian terrace house
- Beautifully finished throughout
- Nearly 1200 square feet of internal living space
- Bright and airy throughout
- Sought-after location
- Brockwell Park is situated at the end of the road
- Development potential
- Freehold

Council tax band

EPC rating D (63)





K

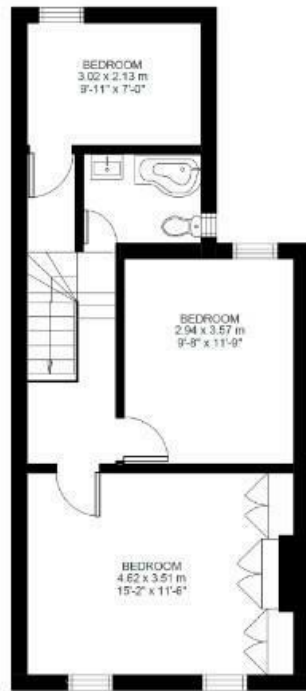
Shakespeare Road

3 Bed house

Approx internal area:

1167 sqft 108 sqm

While we do try our very best, floor plans are produced as a guide only and we take no responsibility for the precise accuracy with which any property is represented



First Floor



Ground Floor



Shakespeare Road, Herne Hill, SE24

