



**Lambert Road, Brixton, SW2**

2 bedroom maisonette for sale

**£765,000**

Share of Freehold

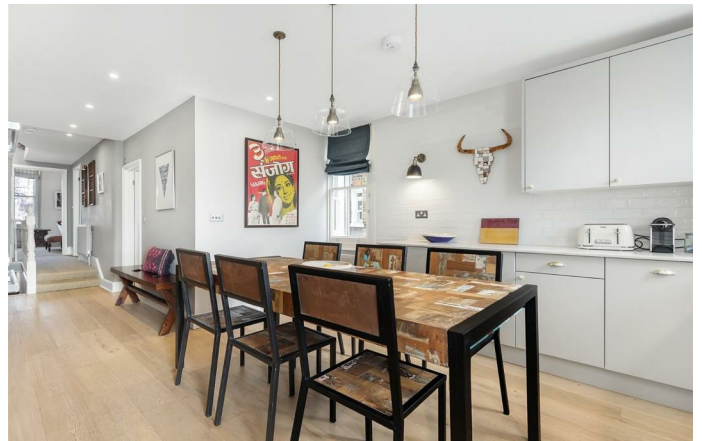
## Property Details

A stunning split level, two double bedroom purpose-built Victorian maisonette with a spacious South-facing roof terrace on an aesthetically pleasing residential street, tucked away quietly off Brixton Hill. With nearly 1100 square feet of internal living space, the property offers generous proportions throughout, which is exceptionally rare to find. This gorgeous apartment is in fantastic condition and has been completely refurbished throughout over time, featuring in property magazines for the tasteful décor. The location is key, attracting purchasers contemplating moving to Brixton and Clapham. Brixton is situated within a ten to twelve-minute walk, with super-fast links to Central London, the lauded Brixton Village and the wide-open spaces of Brockwell Park. Within a twelve to fourteen-minute walk you have all that Clapham has to offer with transport links that include Clapham High Street station and Clapham North tube station.

## Features

- Two double bedrooms
- Victorian purpose-built maisonette
- Split over various levels
- Beautifully finished throughout
- Nearly 1100 square feet of internal living space
- Planning permission granted
- Spacious South-facing private roof terrace
- Within walking distance to the Northern and Victoria tube lines
- Share of freehold

Council tax band      EPC rating C (75)





Lambert Road, Brixton, SW2

**K**

2 Bed flat

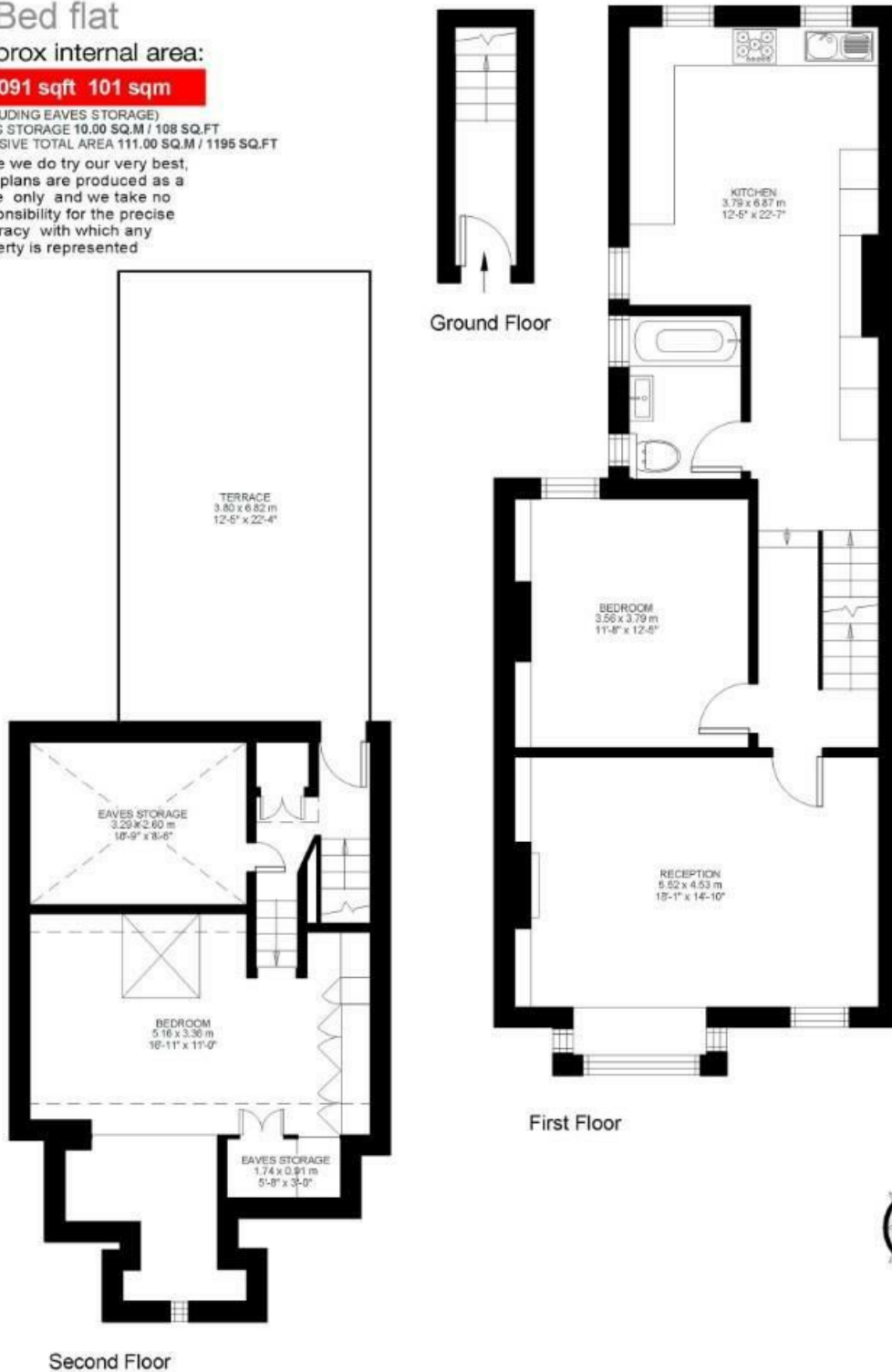
Approx internal area:

**1091 sqft 101 sqm**

(EXCLUDING EAVES STORAGE)  
EAVES STORAGE 10.00 SQ.M / 108 SQ.FT  
INCLUSIVE TOTAL AREA 111.00 SQ.M / 1195 SQ.FT

While we do try our very best, floor plans are produced as a guide only and we take no responsibility for the precise accuracy with which any property is represented

Lambert Road



Lambert Road, Brixton, SW2

