



Roupell Road, Brixton, SW2

£385,000

1 bedroom flat - purpose built for sale

Property Details

A ground floor, one-bedroom garden flat for sale in a secure development, located on a quiet residential road, ideally located between Brixton, Tulse Hill and Streatham Hill. A bright central hallway leads to a spacious and inviting semi-open plan reception room, with plenty of space for both dining and relaxing. The kitchen is sleek and modern, with all you need in terms of mod cons, worktop space and storage. Just off the hallway is a contemporary bathroom and a generous double bedroom with fitted storage. Glass doors open up onto a South-facing, private garden: this peaceful and sunny garden feels worlds away from the hustle and bustle of city life and will lend itself perfectly to alfresco dining or relaxing with a drink during the warmer months. Roupell Road is a seventeen-minute stroll down Brixton Hill to Brixton tube station and the culinary wonders of Brixton Village. This property has access to the extensive bus network on Brixton Hill which is just a few minutes' walk with multiple buses whisking you down the hill to the tube station in a couple of minutes and into central London.

Features

- One double bedroom
- Secure modern development
- Bright and airy throughout
- Over 500 square feet of internal living space
- Private Garden

Council tax band

EPC rating C (77)



Roupell Road, Brixton, SW2



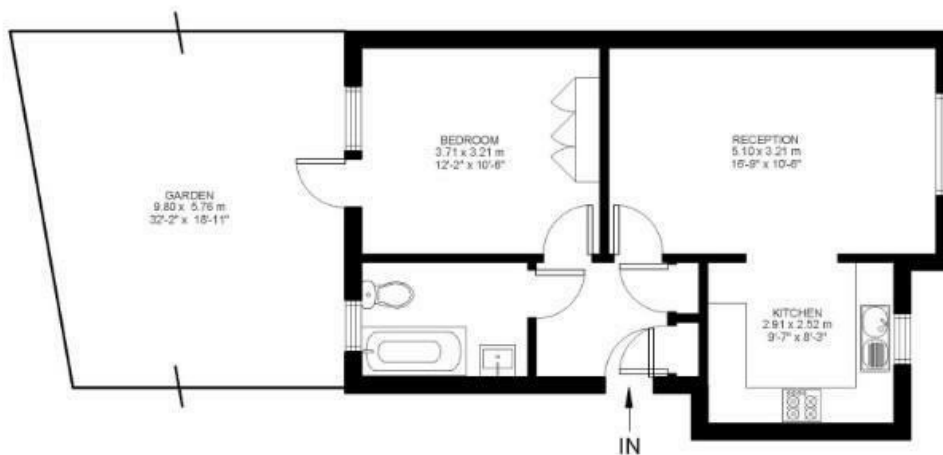
1 Bed flat

Approx internal area:

508 sqft 47 sqm

While we do try our very best, floor plans are produced as a guide only and we take no responsibility for the precise accuracy with which any property is represented

Roupell Road



Ground Floor



Roupell Road, Brixton, SW2

