

Josephine Avenue, Brixton, SW2

3 bedroom house for sale

£1,075,000

Property Details

Keating Estates are proud to present this exceptional three double bedroom, three bathroom townhouse for sale, positioned within a secure, gated boutique development, built in 2016. The house has been engineered for a sense of space, luxury and light, through the layout's fluid design which makes excellent use of the generous footprint. Set within a charming conservation area, the property offers modernity and quality just a stone's throw from the heart of vibrant Brixton. With one of London's best parks three minutes' walk away, the enormous quantity and variety of night-life on offer a short walk away in Brixton, and three train stations on different lines each within easy reach as well as the tube, the location cannot be overstated. The secure and gated development is situated on an extremely popular road, in a leafy part of vibrant and thriving Brixton. Nestled amongst the attractive Victorian houses of beautiful, tree-lined Josephine Avenue, the property can only be recognised as a modern build by the higher level of detailing and crispness of its features within, with the shapes, lines and light only available from the very best of contemporary building design.

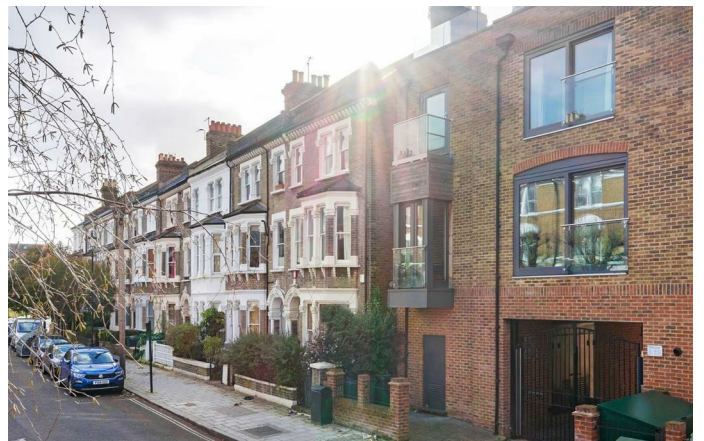
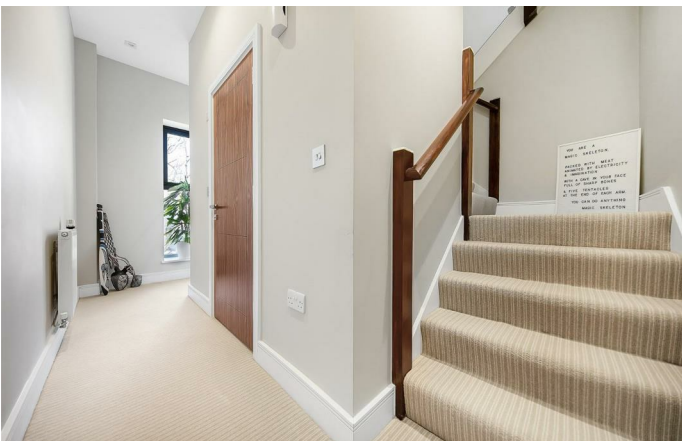
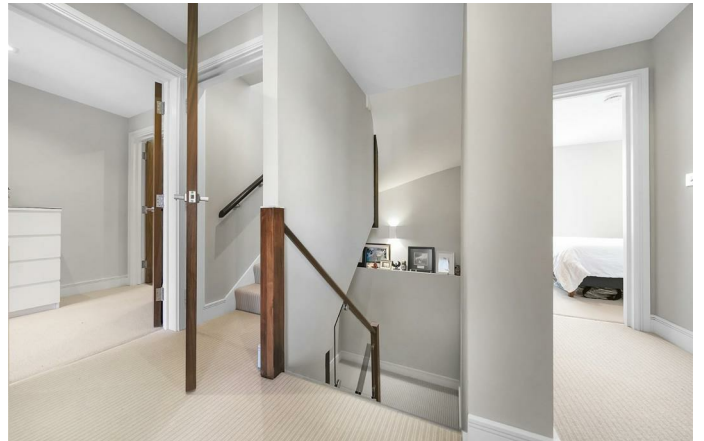
Features

- Three double bedrooms
- Three bathrooms
- Two reception rooms
- Secure modern development
- Off-street allocated parking space
- Stunning roof terrace and summer room
- Large pane windows and multiple Juliet balconies
- Outstanding building warranty

Council tax band

EPC rating C (77)





Josephine Avenue, Brixton, SW2

K

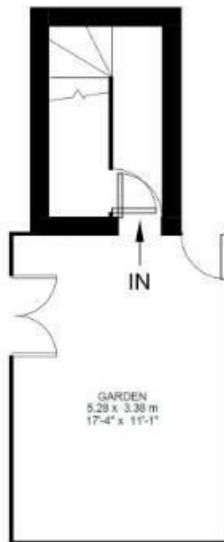
3 Bed house

Approx internal area:

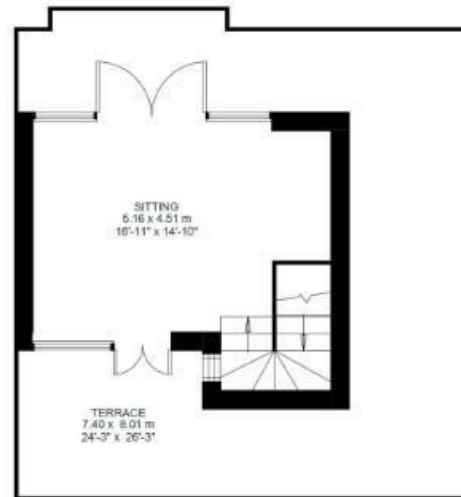
1594 sqft 148 sqm

While we do try our very best, floor plans are produced as a guide only and we take no responsibility for the precise accuracy with which any property is represented

Josephine Avenue



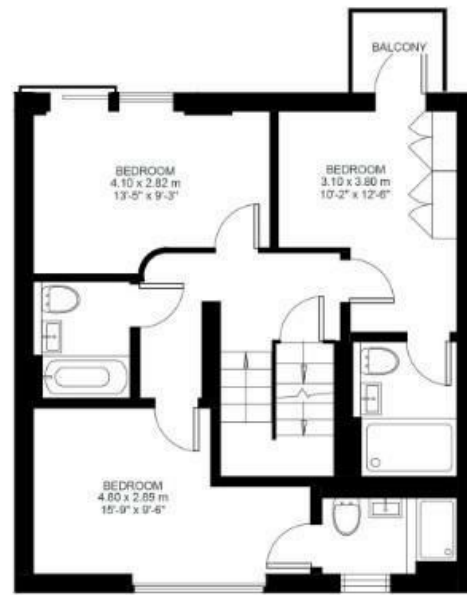
Ground Floor



Third Floor



First Floor



Second Floor



Josephine Avenue, Brixton, SW2

