**Loats Road, Brixton, SW2****£350,000**

1 bedroom flat - purpose built for sale

Property Details

A perfectly laid-out one double bedroom flat with a private garden, forming part of this popular low rise development. Ideally sandwiched between Clapham and Brixton, both areas are easily accessed within a twelve to fifteen-minute walk. This bright garden flat benefits from its own front door and comprises a comfortable double bedroom, a modern bathroom, contemporary kitchen and spacious separate reception room with ample room to dine and relax. The bright and airy living room has direct access onto the low maintenance private garden, perfect for the warmer months. The property is neutrally presented and ideal for anyone looking to move in hassle-free and stamp their own mark over time.

Features

- One double bedroom
- Bright and airy throughout
- Over 500 square feet of internal living space
- Recently redecorated
- Own front door
- Private garden
- Chain-free

Council tax band B EPC rating D (56)



Loats Road

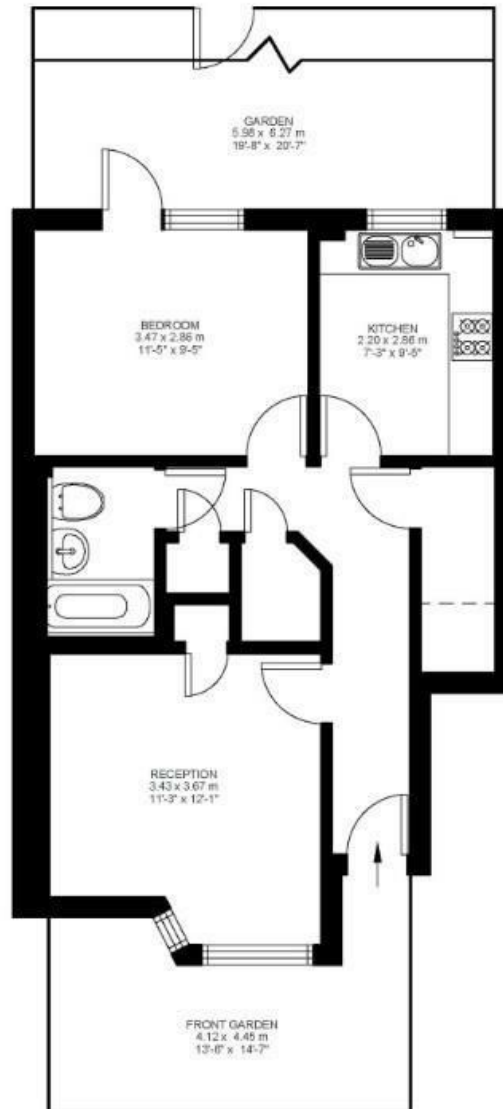
K

1 Bed flat

Approx internal area:

505 sqft 47 sqm

While we do try our very best, floor plans are produced as a guide only and we take no responsibility for the precise accuracy with which any property is represented



Ground Floor



Loats Road, Brixton, SW2

