



Lambert Road, Brixton, SW2

£580,000

2 bedroom flat - conversion for sale

Property Details

A spacious two double bedroom apartment securely nestled on the first floor of a grand double-fronted Victorian townhouse within walking distance of Brixton (10-minute walk) and Clapham high streets (15-17 minute walk). At over 800 square feet of internal living space, the property offers generous proportions throughout, which is exceptionally rare to find. The bright open-plan reception room is packed full of character with ample room to relax, dine and entertain: this room will be used on a regular basis. The kitchen has plenty of storage space with all you need in terms of mod cons and the bay window looks out over the neighbouring playground. The two double bedrooms are both a fantastic size, located at different ends of the building, making the property perfect for anyone looking to rent out a bedroom or share with friends. The flat has high ceilings throughout which adds to the light and airy atmosphere in the property and last but not least there is the added benefit of a large, South-facing communal garden, the perfect space to relax in the warmer months.

Council tax band C

EPC rating D (60)

Features

- Two double bedrooms
- Victorian Conversion
- Two bay windows with high ceilings
- Fantastic dimensions throughout
- Large storage cupboard for this property in the communal area
- Shared Garden
- Sought-after residential road
- Close to Brockwell Park
- Within walking distance to the Northern and Victoria tube lines
- Chain-free



Lambert Road, Brixton, SW2



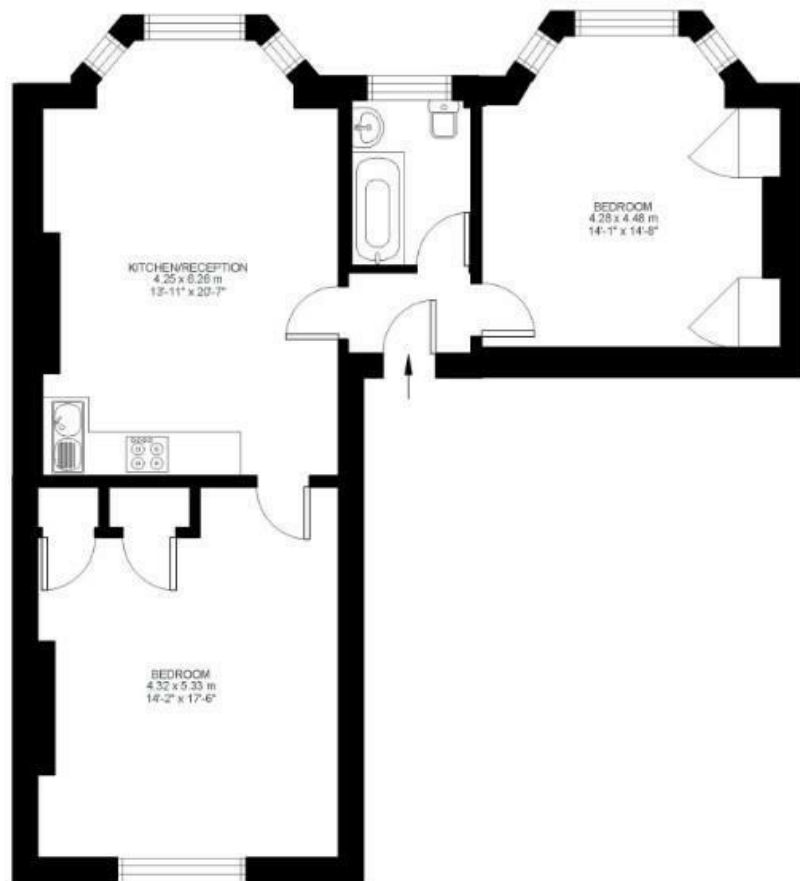
2 Bed flat

Approx internal area:

806 sqft 75 sqm

While we do try our very best, floor plans are produced as a guide only and we take no responsibility for the precise accuracy with which any property is represented

Lambert Road



First Floor



Lambert Road, Brixton, SW2

