



Leander Road, Brixton, SW2

£575,000

3 bedroom flat - conversion for sale

Property Details

This split-level, three double-bedroom Victorian conversion flat comprises a separate reception room, an eat-in kitchen diner, three comfortable double bedrooms and a modern bathroom. The flat is split over various floors which amplify the feeling of space and with nearly 870 square feet of internal living space this property will appeal to a wide range of purchasers. Brixton tube station is a ten to twelve-minute walk and the green open spaces of Brockwell Park are a five-minute stroll. A neutral blank canvas, ready for a purchaser to move in hassle-free and stamp their own mark over time.

Features

- Three double bedrooms
- Victorian conversion
- Bright and airy throughout
- Neutral blank canvas
- Characterful features
- Close to Brockwell Park
- Split-level
- Chain-free

Council tax band D EPC rating C (71)



K

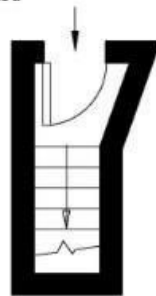
Leander Road

3 Bed flat

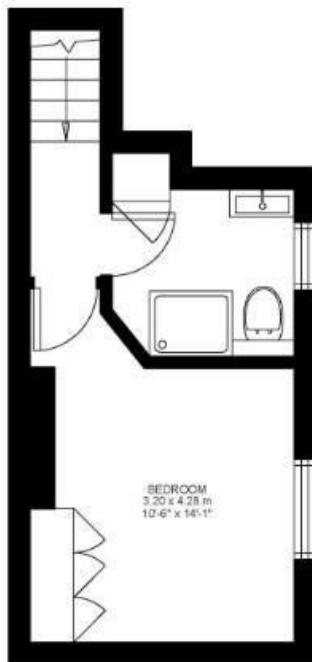
Approx internal area:

868 sqft 81 sqm

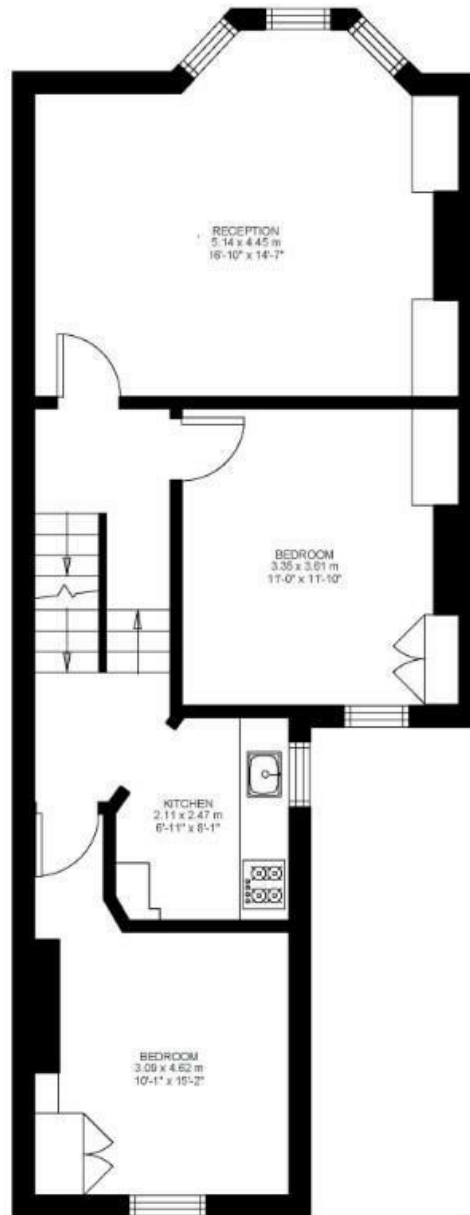
While we do try our very best, floor plans are produced as a guide only and we take no responsibility for the precise accuracy with which any property is represented



Ground Floor



Second Floor



First Floor



Leander Road, Brixton, SW2

