



Chaucer Road, Herne Hill, SE24

1 bedroom flat - conversion for sale

£465,000

Share of Freehold

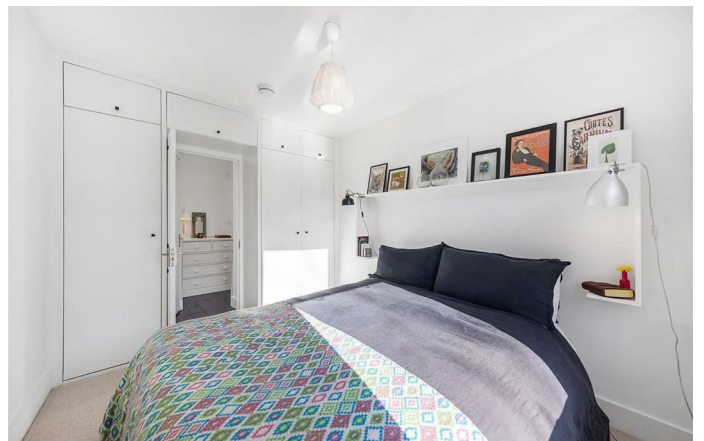
Property Details

A well-appointed one bedroom flat, on the upper ground floor of a Victorian converted house. Chaucer Road is located in Poets' Corner, equidistant to both Brixton and Herne Hill, with Brockwell Park at the end of the road. The property comprises a semi open plan kitchen/reception room, one double bed with fitted wardrobes and a modern bathroom. The property is situated in a popular location and unlike a lot of similar conversions, the majority of the total square footage is useable living space, as opposed to being distributed within larger hallways. Herne Hill station is a seven-minute walk with access to Canary Wharf in thirty-eight minutes and Victoria within seventeen minutes, door to door. Central Brixton is also within a ten-minute walk. The restaurants within the lauded Brixton Village and Brixton Station are an eleven-minute stroll. Share of freehold.

Council tax band B EPC rating C (74)

Features

- One double bedroom
- Victorian conversion
- Bright and airy atmosphere throughout
- Characterful features
- Built-in storage
- Brockwell Park is located at the end of the road
- Walking distance to Herne Hill and Brixton town centres
- Highly desirable road in Poets Corner
- Share of freehold



K

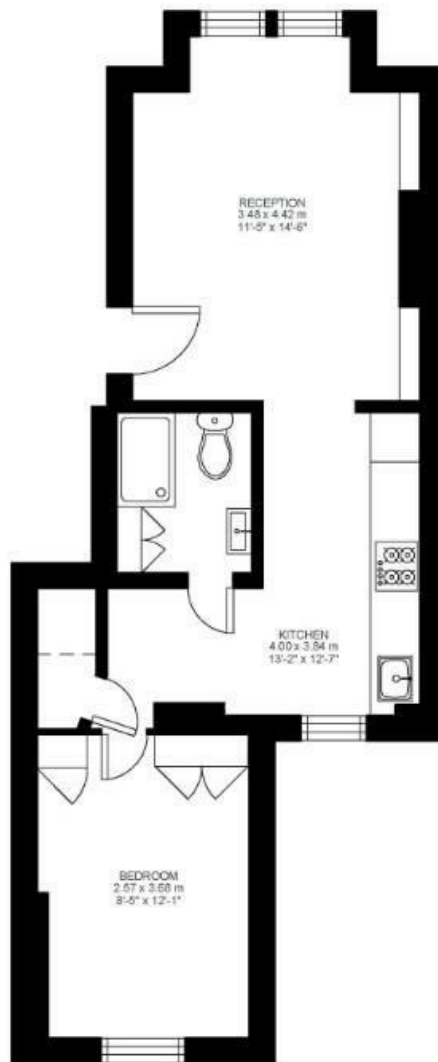
Chaucer Road

1 Bed flat

Approx internal area:

434 sqft 40 sqm

While we do try our very best, floor plans are produced as a guide only and we take no responsibility for the precise accuracy with which any property is represented



Raised Ground Floor



Chaucer Road, Herne Hill, SE24

