

Brixton Water Lane, Brixton, SW2

£500,000

2 bedroom flat - purpose built for sale

Property Details

A fantastic two double bedroom flat with a private balcony, in a luxury, modern development in the heart of Brixton, located a stone's throw from Brockwell Park. The open plan living space has an abundance of natural light, and ample room in which to relax and dine. The space flows seamlessly onto a spacious private balcony, the perfect spot in which to enjoy drinks in the sun during the warmer months. The kitchen is sleek and well designed, with all you might need in terms of mod cons. The two bedrooms are comfortable doubles and flooded with light from large-pane windows, glazed to the highest modern energy standards. The bathroom has a luxurious feel, with a high standard of fittings. This secure, gated development has well-maintained communal areas and access to a stunning communal roof terrace with 360 degree views across the neighbouring roof tops and into the distance. This flat is perfect for anyone who wants to be close to the action, situated an eight minute walk to the heart of Brixton - just round the corner from The Ritzy, POP Brixton, Brixton Village and Brockwell Park.

Features

- Two double bedrooms
- Secure modern development
- Bright and airy atmosphere throughout
- Nearly 600 square feet of internal living space
- Private terrace off the living room
- Large communal roof terrace with 360 degree views
- Close to Brockwell Park
- Chain-free

Council tax band EPC rating B (82)



K

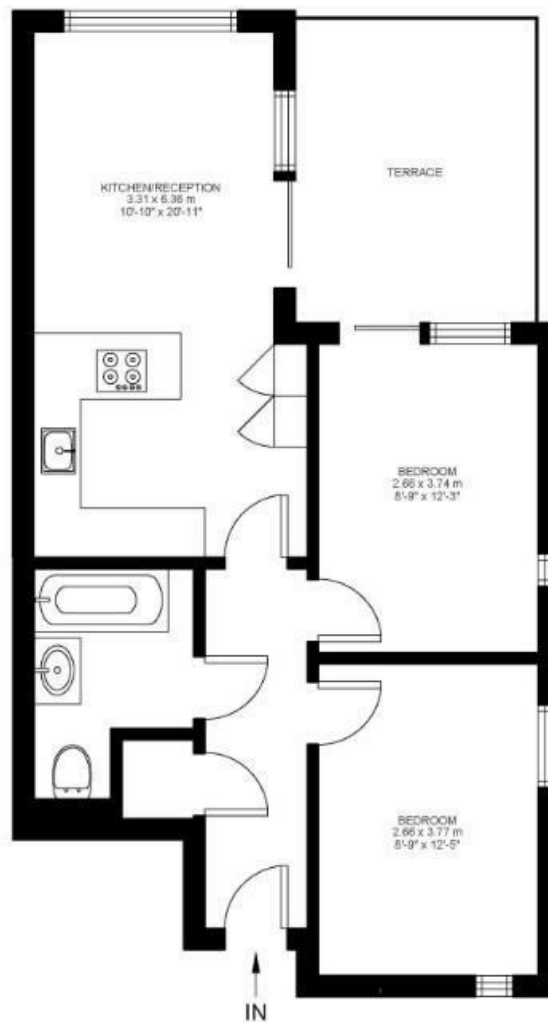
Brixton Water Lane

2 Bed flat

Approx internal area:

577 sqft 54 sqm

While we do try our very best, floor plans are produced as a guide only and we take no responsibility for the precise accuracy with which any property is represented



Third Floor



Brixton Water Lane, Brixton, SW2

