

**Clapham Road, Clapham, SW9****£475,000**

1 bedroom flat - conversion for sale

Property Details

A larger than average, beautifully presented, one bedroom garden flat within an exquisite Grade II Listed, Georgian mansion block. Accessed via a grand, well-maintained private driveway, this beautifully presented apartment feels like a home, the moment you walk through the door. The property comprises a bright and spacious open plan reception room, complete with a sleek, contemporary kitchen, finished to a high standard of fittings and boasting integrated appliances. There is ample room for dining, relaxing and entertaining, with some handy built-in storage. The reception room opens onto a low-maintenance patio garden, a fantastic bonus and ideal for relaxing in the sun during the warmer months. The double bedroom is a generous size and the modern bathroom has been recently fitted in a luxurious style. This handsome building is set back quietly from Clapham Road behind a sweeping driveway. There are excellent transport links with two Northern Line underground stations (Clapham Common and Clapham North), Clapham High Street Station on the Overground, Stockwell tube station (Victoria and Northern Line) and numerous bus routes to other areas of London, all within a few minutes' walk.

Features

- One double bedroom
- Georgian conversion
- Grade II listed building
- Contemporary design
- Over 570 square feet of internal living space
- Private garden
- Set back from the road, moments from the tube station

Council tax band D EPC rating C (71)



Clapham Road

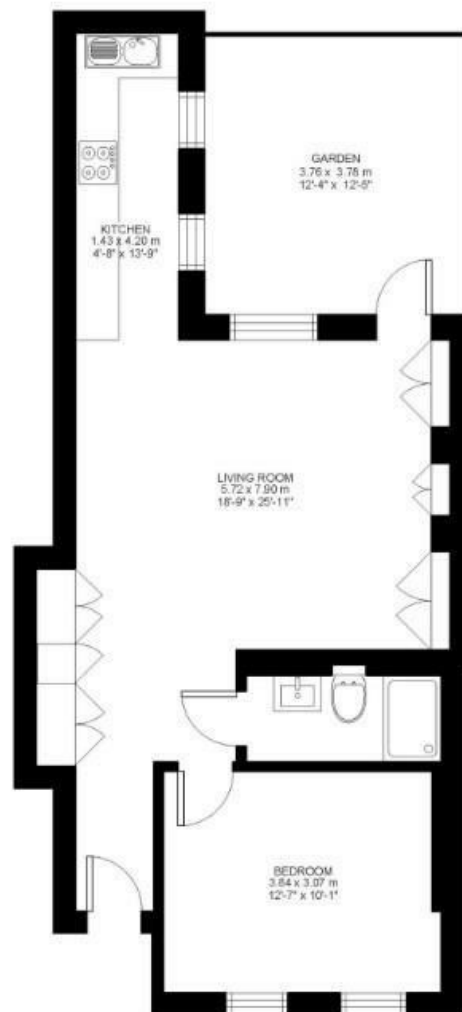
K

1 Bed Flat

Approx internal area:

571 sqft 53 sqm

While we do try our very best, floor plans are produced as a guide only and we take no responsibility for the precise accuracy with which any property is represented



Clapham Road, Clapham, SW9

