



Pulross Road, Brixton, SW9

£750,000

3 bedroom flat - conversion for sale

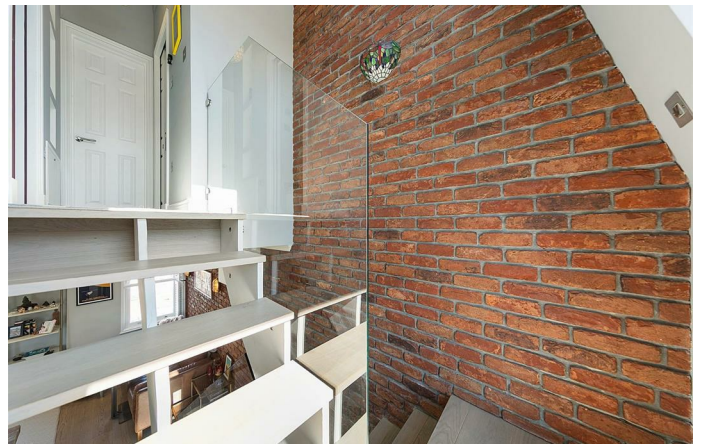
Property Details

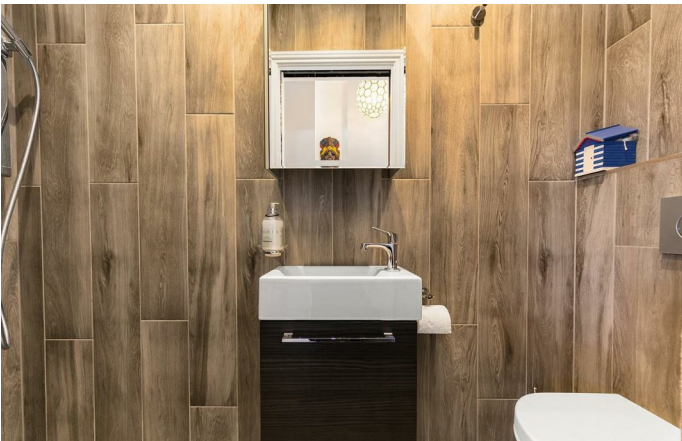
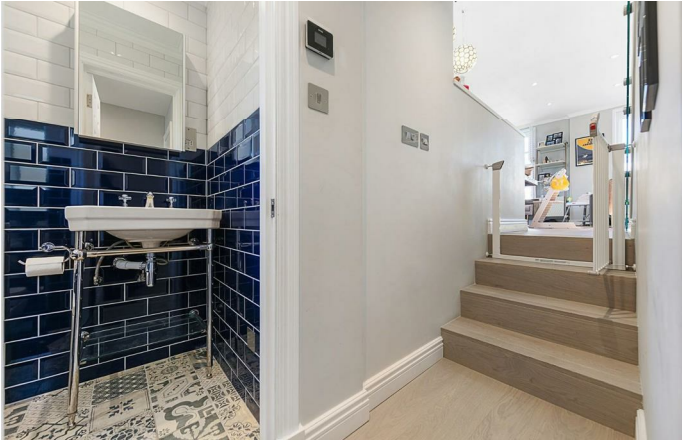
A three bedroom, two bathroom flat, split over the top floors of this Victorian terraced house on Pulross Road. There are multiple selling points including the location, the finish, proximity to transport, and direct access onto a flat roof, to name a few. With 850 square feet of internal living space, the property offers generous proportions throughout. Pulross Road is a Victorian terraced street nestled within the sought-after triangle of Brixton, Stockwell and Clapham. A three-minute stroll to Brixton tube station, just around the corner from Windrush Square, Brixton Village, The Ritzy and POP Brixton, this street seems a world away. The green open spaces of Brockwell Park are close-by and within a ten to twelve-minute walk, you have all that Clapham has to offer, with transport links that include Clapham High Street station and Clapham North tube station. Stockwell is a ten-minute walk with access to both Northern and Victoria tube lines.

Features

- Three double bedrooms
- Victorian Conversion
- Characterful features
- Nearly 850 square feet of internal living space
- Sought-after location
- Appealing to buyers contemplating moving to Brixton, Clapham and Stockwell
- Walking distance to Victoria and Northern tube lines

Council tax band C EPC rating D (56)







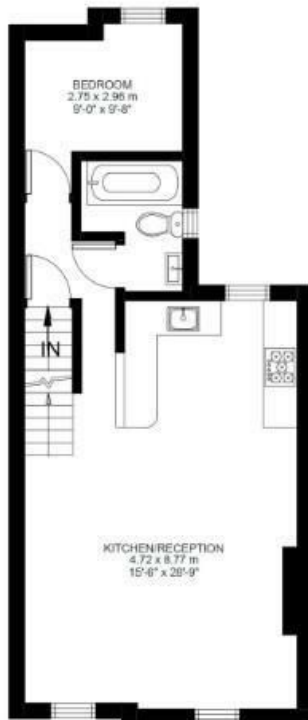
Pulross Road

3 Bed Flat

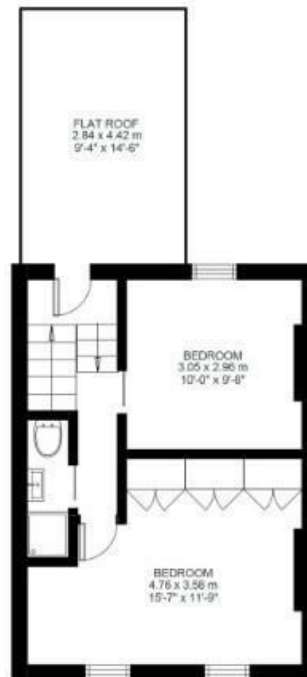
Approx internal area:

846 sqft 79 sqm

While we do try our very best, floor plans are produced as a guide only and we take no responsibility for the precise accuracy with which any property is represented



First Floor



Second Floor



Pulross Road, Brixton, SW9

