



## Rosebery Road, Brixton, SW2

1 bedroom flat - conversion for sale

£340,000

Share of Freehold

### Property Details

This is a perfectly formed, split-level one bedroom garden flat in a lovely residential road sandwiched between Brixton and Clapham. The property comprises its own entrance, an open-plan reception and kitchen, a double bedroom with built-in storage, a modern bathroom and a private garden. Multiple buses run up and down Kings Avenue and offer a speedy route to the tube stations for commuters. The property is only a short walk from the amenities on offer within Brixton (19 minute stroll), Clapham High Street (13 minute stroll) and Abbeville Village (7 minute stroll). Share of freehold.

Council tax band A    EPC rating D (64)

### Features

- One double bedroom
- Victorian conversion
- Own front door
- Over 400 square feet of internal living space
- Private Garden
- Walking distance to the Northern and Victoria tube lines
- Chain-free
- Share of freehold



# Rosebery Road

# K

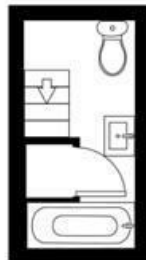
## 1 Bed Flat

Approx internal area:

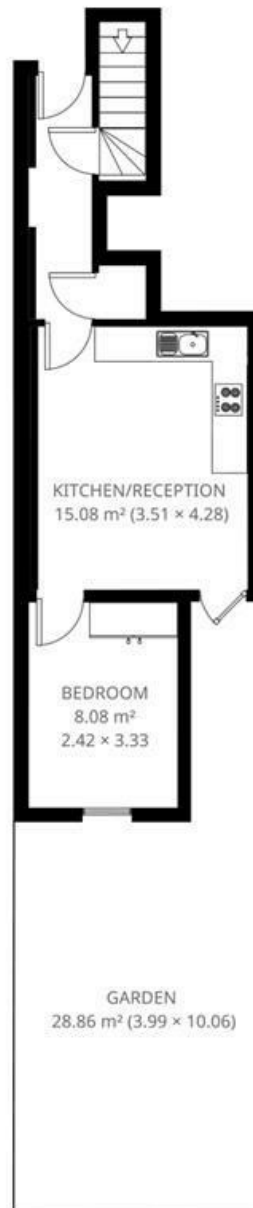
402 sqft 37 sqm

While we do try our very best, floor plans are produced as a guide only and we take no responsibility for the precise accuracy with which any property is represented

Basement



Ground Floor



Rosebery Road, Brixton, SW2

