

Branksome Road, Brixton, SW2

£350,000

1 bedroom flat for sale

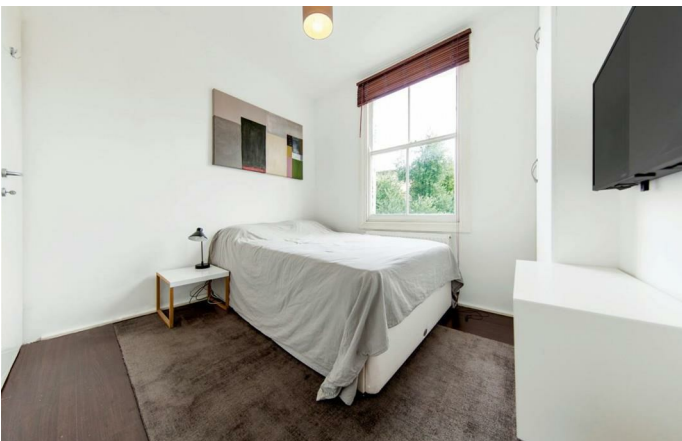
Property Details

This is a lovely one double bedroom flat in a Victorian conversion. The property comprises of an open plan reception and kitchen area, modern bathroom and a double bedroom. The flat is in good condition, ideal for anyone looking to move in hassle-free, situated in a fantastic location and unlike a lot of similar conversions, the majority of the total square footage is useable living space, as opposed to being distributed within hallways. The property is perfectly formed and due to the location, it will appeal to a wide range of purchasers. Clapham and Brixton are both within a ten-minutes.

Features

- One double bedroom
- Victorian conversion
- Bright and airy throughout
- Walking distance to the Northern and Victoria tube lines
- Chain-free

Council tax band B EPC rating C (70)



Branksome Road, Brixton, SW2



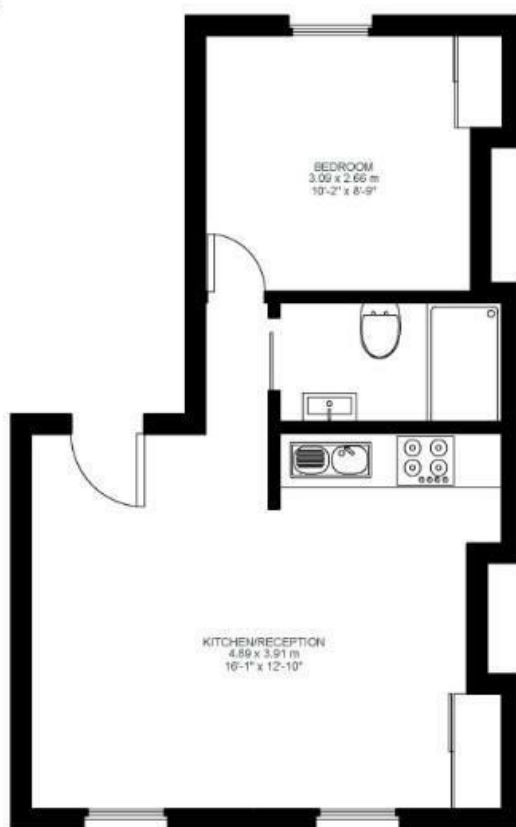
1 Bed flat

Approx internal area:

333 sqft 31 sqm

While we do try our very best, floor plans are produced as a guide only and we take no responsibility for the precise accuracy with which any property is represented

Branksome Road



First Floor



Branksome Road, Brixton, SW2

