



Helix Road, Brixton, SW2

3 bedroom flat - conversion for sale

£775,000

Share of Freehold

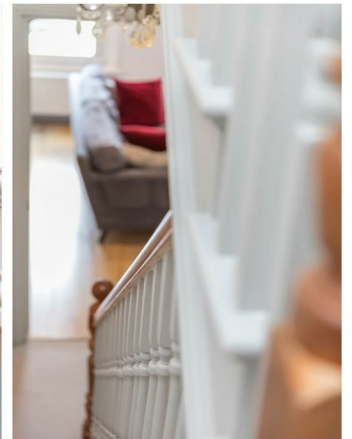
Property Details

This exceptional, split-level, three double bedroom, three bathroom apartment occupies the first and second floors of one of the pretty terraced houses on Helix Road. The property has a lovely Victorian facade is situated in the heart of the ever-popular Josephine Avenue Conservation area, a quiet and leafy network of similarly attractive, Victorian terraced roads. The centre of Brixton, South London's new culinary mecca, is a ten-twelve minute walk, with all it has to offer in terms of restaurants, nightlife and transport links, whilst arguably London's finest open space, Brockwell Park, with its iconic 1930s Lido, is close by. This property is packed full of character with fantastic dimensions and really makes the most of its large rooms and open spaces. Split over four levels and with over 1240 square feet of internal space, there is a light and airy atmosphere throughout.

Council tax band D EPC rating D (67)

Features

- Three double bedrooms
- Three bathrooms
- Victorian conversion
- Split over various floors
- Beautifully finished with characterful features
- Over 1240 square feet of internal living space
- Highly sought-after road in the Josephine conservation area
- Close to Brockwell Park
- Share of freehold



Helix Road



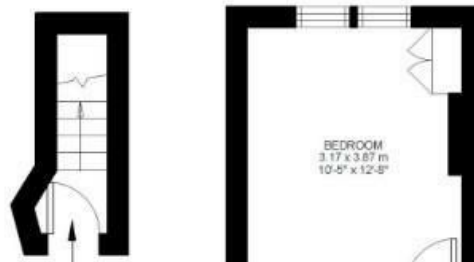
3 Bed Flat

Approx internal area:

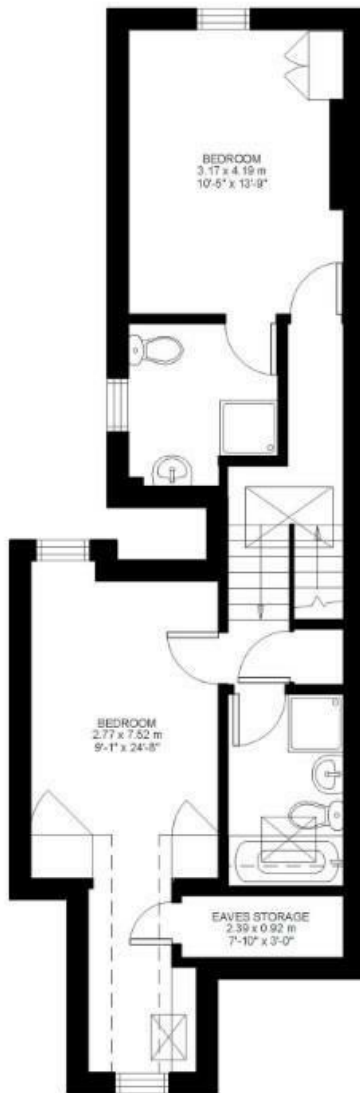
1241 sqft 115 sqm

(EXCLUDING EAVES STORAGE)
EAVES STORAGE 2.33 SQ.M / 25 SQ.FT
INCLUSIVE TOTAL AREA 117.62 SQ.M / 1266 SQ.FT

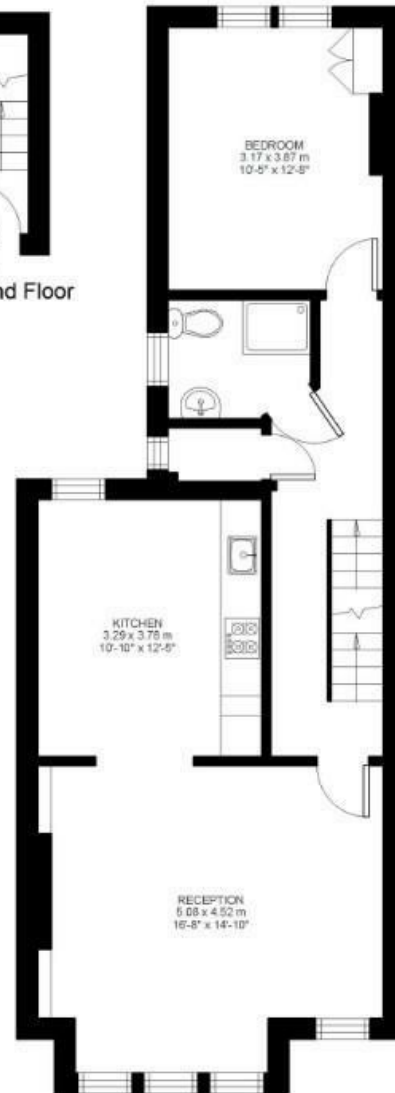
While we do try our very best, floor plans are produced as a guide only and we take no responsibility for the precise accuracy with which any property is represented.



Ground Floor



Second Floor



First Floor



Helix Road, Brixton, SW2

