

**Elm Park, Brixton, SW2**

**£550,000**

2 bedroom flat - conversion for sale

## Property Details

A beautifully presented, two double bedroom garden flat on a popular residential road, perfectly positioned within close proximity to the wonderful greenery of Brockwell Park, and all that central Brixton has to offer. At the front of the property sits the well-proportioned, open plan reception room, with high ceilings and a bright bay window that create a light and airy atmosphere. The modern kitchen is tastefully finished and has ample space for a dining table. Doors open up onto the side return and decked garden. Down the hallway, the two double bedrooms are tucked away quietly to the rear of the property. The master is a generous size whilst the second bedroom is perfect for use as a study, guest room or child's bedroom, and the bedrooms share a stylish, recently fitted bathroom. The low-maintenance, private rear garden is the icing on the cake.

## Features

- Two double bedrooms
- Victorian conversion
- Over 700 square feet of internal living space
- Cellar
- Great condition throughout
- Private South East facing garden
- Walking distance to Brockwell Park and Brixton Village

Council tax band C    EPC rating C (73)





# K

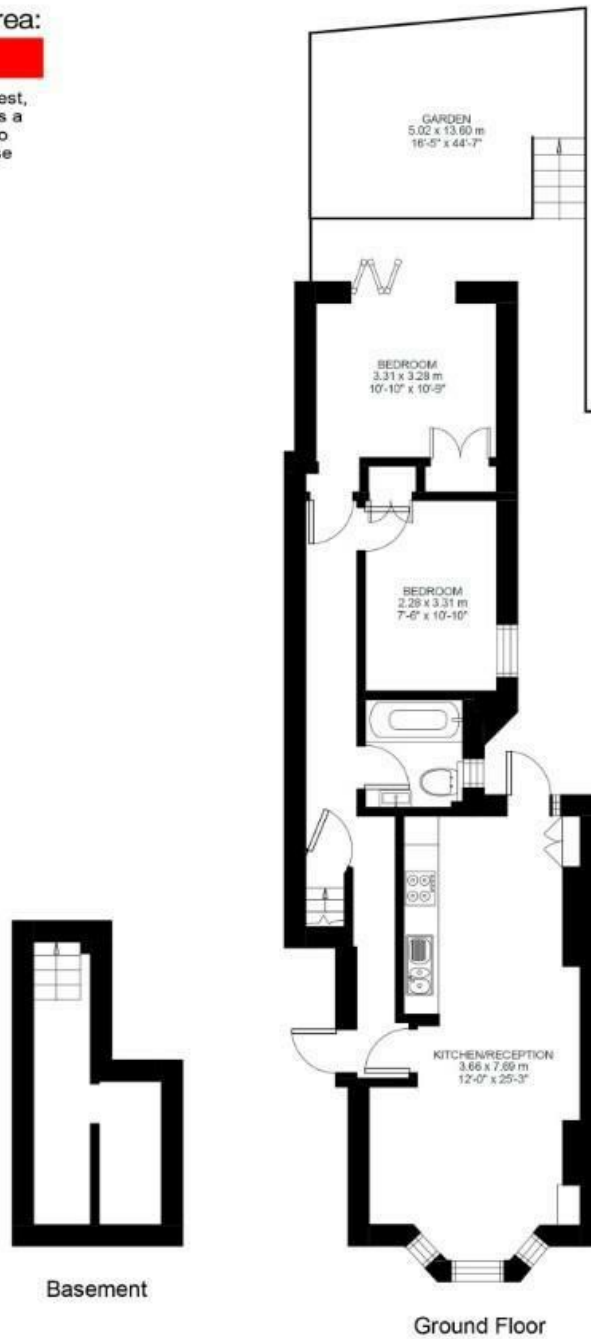
## Elm Park

### 2 Bed Flat

Approx internal area:

**709 sqft 66 sqm**

While we do try our very best, floor plans are produced as a guide only and we take no responsibility for the precise accuracy with which any property is represented



Elm Park, Brixton, SW2

