

Railton Road, Herne Hill, SE24

£475,000

2 bedroom flat - conversion for sale

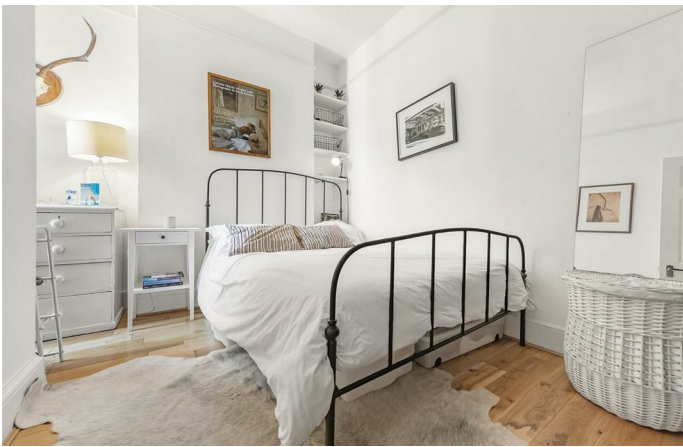
Property Details

A well-presented two double bedroom, ground floor flat within a Victorian conversion, perfectly located between Brixton and Herne Hill. Two double bedrooms share a stylish, modern bathroom. To the rear, a bright and airy open-plan reception room provides ample space to relax and dine, whilst the contemporary kitchen has all you need in terms of storage and worktop space. Railton Road is a popular street that runs between Brixton and Herne Hill, making it a popular location for anyone looking to be close to the action in both of these sought-after neighbourhoods. The property is a stone's throw from the restaurants, bars and cafés that make up the bright lights of Atlantic Road and central Brixton, along with first stop on the Victoria Line at Brixton tube station. Leafy Herne Hill is a ten minute stroll in the opposite direction, with what many local residents regard as London's best public space, Brockwell Park, located within a few minutes' walk, along with its iconic 1930s Lido. With Brixton Village, Brockwell Park, and Herne Hill's pubs, restaurants and the French market all on your doorstep, there is something to cater for all tastes.

Features

- Two double bedrooms
- Period conversion
- Nearly 600 square feet of internal living space
- Tastefully decorated throughout
- Sought-after location close to Brockwell Park
- Appealing to purchasers contemplating moving to Brixton and Herne Hill

Council tax band C EPC rating C (74)



Railton Road

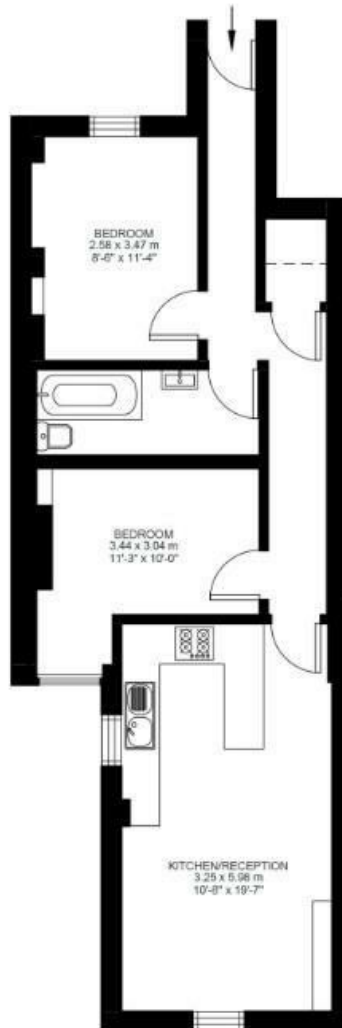


2 Bed Flat

Approx internal area:

585 sqft 54 sqm

While we do try our very best, floor plans are produced as a guide only and we take no responsibility for the precise accuracy with which any property is represented



Ground Floor



Railton Road, Herne Hill, SE24

