



Wingmore Road, Herne Hill, SE24

4 bedroom house - terraced for sale

£950,000

Freehold

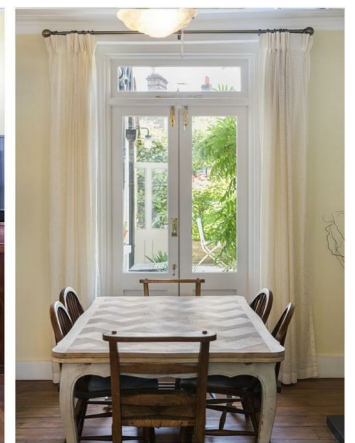
Property Details

A beautiful example of a four double bedroom Victorian terraced house, located on this sleepy street, moments from Loughborough Junction train station. Wingmore Road is perfectly positioned for access to Brixton, Camberwell and Herne Hill, and will appeal to purchasers who are contemplating moving to these each of these sought-after neighbourhoods. The green open spaces of Ruskin Park are a few minutes away, and Brixton Village and Brixton tube station (first stop on the Victoria Line) are in the other direction - there is something to cater for everyone. The house is beautifully presented by its current owners, showcasing its Victorian charm throughout. The dual-aspect reception room is packed full of character with wooden flooring, two feature fireplaces, and sash windows with shutters. This bright and airy room is sure to be used on a regular basis, providing the perfect space in which to relax or entertain guests. The country-style kitchen diner has exposed brickwork and plenty of storage, and access onto a beautifully maintained rear garden. This sunny, South-East facing spot feels worlds away from the hustle and bustle of city life.

Council tax band E EPC rating E (49)

Features

- Four double bedrooms
- Period terrace house
- Characterful features
- Nearly 1300 square feet of internal living space
- South-East facing private garden
- Close to Ruskin Park
- Walking distance to Loughborough Junction, Brixton and Herne Hill stations
- Freehold





Wingmore Road, Herne Hill, SE24

K

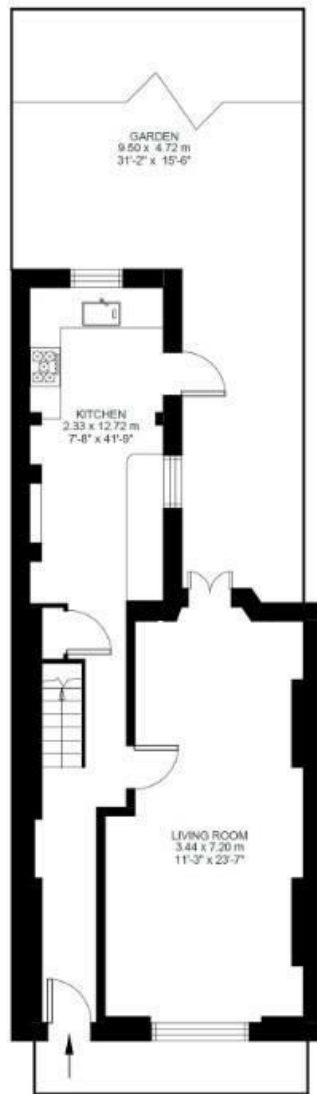
4 Bed House

Approx internal area:

1272 sqft 118 sqm

While we do try our very best, floor plans are produced as a guide only and we take no responsibility for the precise accuracy with which any property is represented

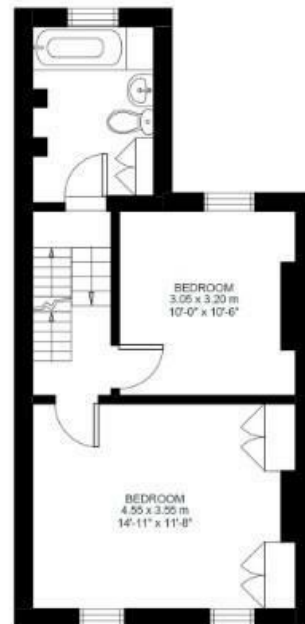
Wingmore Road



Ground Floor



Second Floor



First Floor



Wingmore Road, Herne Hill, SE24

