



Kingswood Road, Brixton, SW2

4 bedroom house for sale

£1,150,000

Freehold

Property Details

An elegant example of a four double bedroom Victorian terraced house, perfectly located in this popular residential road between Clapham and Brixton. This stylish house has been finished to a high standard, resulting in a stunning family home with a tasteful blend of contemporary design and charming period features, whilst also keeping energy efficiency in mind – the house has the fantastic benefit of multiple solar panels, solar heated water and Tesla battery storage. With over 1800 square feet of living space on offer, four double bedrooms, and a secluded garden to match, it is hard to remind yourself that you are, indeed, around a fifteen minute walk away from both the Northern and Victoria lines, with easy access into Central London and beyond. Potential purchasers will benefit from fantastic local amenities, a few examples include the green open spaces of Brockwell Park and Clapham Common, and all that Brixton Village, POP Brixton, Clapham High Street, Clapham Old Town and Abbeville Village have to offer in terms of food and festivities.

Council tax band F

EPC rating D (65)

Features

- Four double bedrooms
- Two bathrooms and a separate ground floor WC
- Victorian house
- Characterful features
- Substantial loft space
- Potential to extend
- Quiet residential street
- Walking distance to the Northern and Victoria tube lines
- A short stroll to Abbeville and Brixton Villages
- Freehold





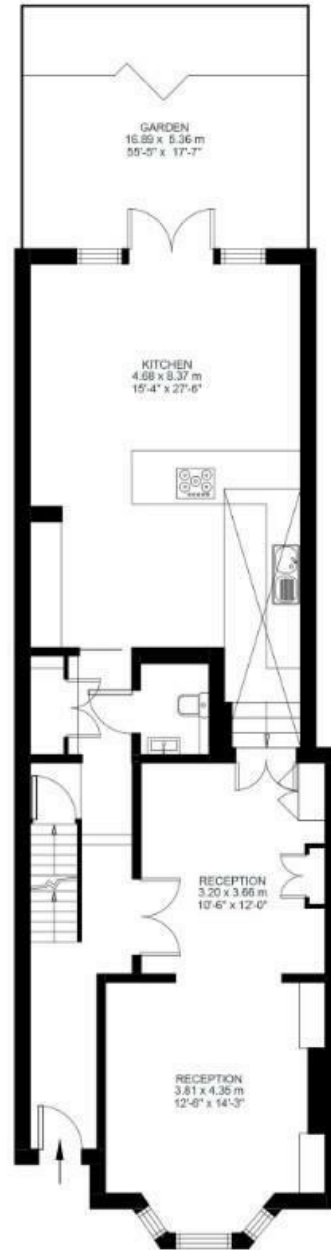
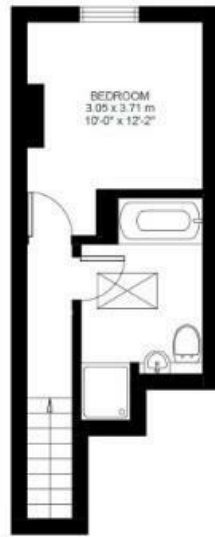
Kingswood Road, Brixton, SW2

K

4 Bed House
 Approx internal area:
1814 sqft 169 sqm

While we do try our very best, floor plans are produced as a guide only and we take no responsibility for the precise accuracy with which any property is represented

Kingswood Road



Kingswood Road, Brixton, SW2

