



Gateley Road, Brixton, SW9

5 bedroom house - end terrace for sale

£1,450,000

Freehold

Property Details

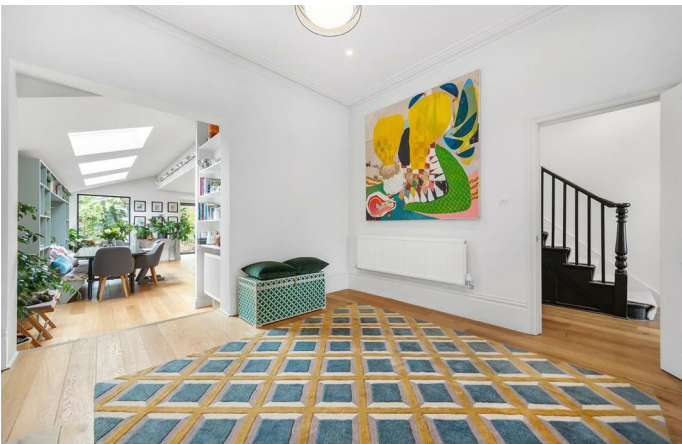
An impressive example of a five-bedroom, three-bathroom Victorian end-of-terrace house, this beautiful home on Gateley Road is surrounded by similarly grand and elegant houses; either side and opposite. However, this one really is something special. With over 2300 square feet of internal living space on offer and an unrivalled central location, perfectly sandwiched between amenities in Brixton, Clapham and Stockwell. This stunning end-of-terrace house will appeal to purchasers who are contemplating moving to all three of these sought-after locations; with a varied array of nightlife, restaurants, shops and transport links on the doorstep, purchasers will be spoiled for choice. This is an exquisite home, which could be moved into stress-free, benefitting from the hard work that has been completed to extend and renovate and resulting in the perfect mix of period features and tasteful, modern design.

Council tax band F

EPC rating D (62)

Features

- Five bedrooms
- Three bathrooms
- Victorian House
- Beautifully finished with characterful features
- Over 2300 square feet of internal living space
- South-East facing private garden
- Sought-after residential road a few moments from Brixton tube station
- Appealing to purchasers contemplating moving to Brixton, Clapham and Stockwell
- Freehold





Gateley Road, Brixton, SW9



5 Bed House

Approx internal area:

2346 sqft 218 sqm

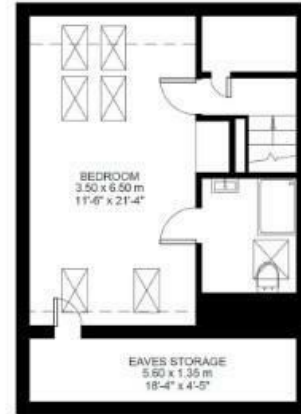
(EXCLUDING EAVES STORAGE)
EAVES STORAGE 7.56 SQ.M / 81 SQ.FT
INCLUSIVE TOTAL AREA 225.56 SQ.M / 2428 SQ.FT

While we do try our very best, floor plans are produced as a guide only and we take no responsibility for the precise accuracy with which any property is represented



Ground Floor

Gateley Road



Second Floor



First Floor

Gateley Road, Brixton, SW9

