



Shakespeare Road, Herne Hill, SE24

£650,000

3 bedroom flat - conversion for sale

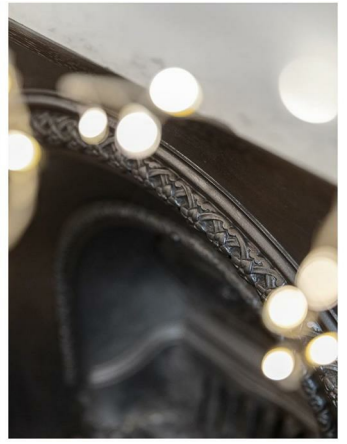
Property Details

A spacious split-level, three double bedroom, two bathroom flat, with over 900 square feet of internal living space within one of the prettiest houses in Poets' Corner. Shakespeare Road is a quaint, tree-lined Victorian road sandwiched between similar roads in this sought-after residential pocket, adjacent to Brockwell Park, and equidistant to leafy Herne Hill and vibrant Brixton. The apartment offers generous proportions and is split over various levels, amplifying the feeling of space, which creates a light and airy atmosphere throughout. Herne Hill station is a six-minute walk and Brixton tube station is a ten-minute stroll. The celebrated Herne Hill establishments are close-by and the restaurants and shops within the lauded Brixton Village, the amenities of the high street and Brixton Station are a ten-minute stroll. The green, open spaces of Brockwell Park are also at the end of the road, along with its fantastic 1930's Lido.

Features

- Three double bedrooms
- Victorian conversion
- Characterful features
- Split over various floors
- Nearly 900 square feet of internal living space
- Sought-after location in the heart of Poets Corner
- Brockwell Park is located at the end of the road
- Appealing to buyers contemplating moving to Brixton and Herne Hill
- Chain-free

Council tax band EPC rating C (70)



Shakespeare Road

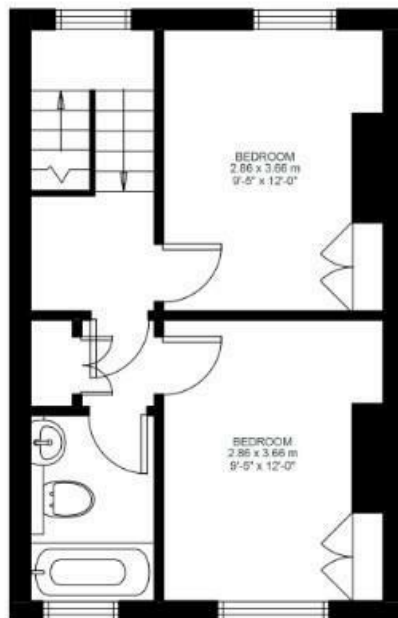
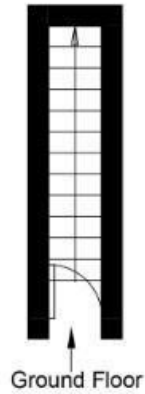
K

3 Bed Flat

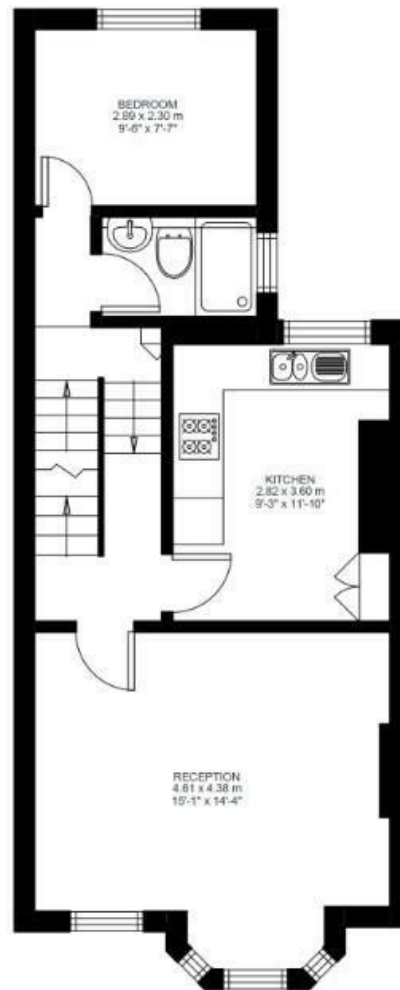
Approx internal area:

892 sqft 83 sqm

While we do try our very best, floor plans are produced as a guide only and we take no responsibility for the precise accuracy with which any property is represented



Second Floor



First Floor



Shakespeare Road, Herne Hill, SE24

