



Horsford Road, Brixton, SW2

6 bedroom house for sale

£1,399,950

Freehold

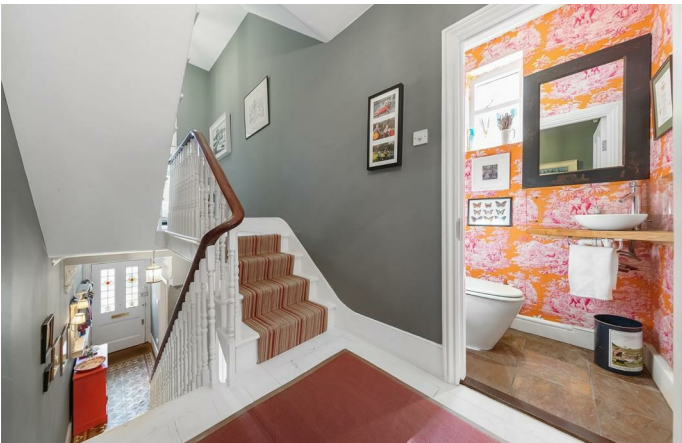
Property Details

A majestic six-bedroom Victorian terrace, located just moments from two of Brixton's most popular primary schools and an eight-minute stroll from the fantastic transport links at Brixton station. This beautiful family home has been lovingly cared for by the current owner and is a light and airy mix of contemporary design and characterful features, including fireplaces, pretty coving and sash windows. With acres of room, over 2500 square feet of internal space, incredible open-plan living space on the ground floor, six double bedrooms, four bathrooms and a secluded garden to match, it's easy to forget that you are indeed still in the heart of Brixton, a stone's throw from everything that this sought-after neighbourhood is famous for. Horsford Road is situated an eight-minute stroll to central Brixton, and a five-minute stroll to the green open spaces of Brockwell Park. A fourteen-minute walk across the park brings you to Herne Hill station and the many pubs, cafes and restaurants of leafy Herne Hill. Both Sudbourne School and Corpus Christi primary schools (Ofsted rated Outstanding) are also within a few minutes' walk.

Council tax band F EPC rating D (61)

Features

- Six double bedrooms
- Four bathrooms and separate WC
- Victorian house
- Characterful features
- Over 2500 square feet of internal living space
- South facing private garden
- Close proximity to two outstanding primary schools
- Short walk to Brockwell Park
- Freehold



Horsford Road, Brixton, SW2

K

6 Bed House

Approx internal area:

2503 sqft 233 sqm

(EXCLUDING EAVES STORAGE)
EAVES STORAGE 3.24 SQ.M / 35 SQ.FT
INCLUSIVE TOTAL AREA 236.24 SQ.M / 2543 SQ.FT

While we do try our very best, floor plans are produced as a guide only and we take no responsibility for the precise accuracy with which any property is represented

Horsford Road



Horsford Road, Brixton, SW2

