



**Winslade Road, Brixton, SW2**

**£715,000**

3 bedroom flat - conversion for sale

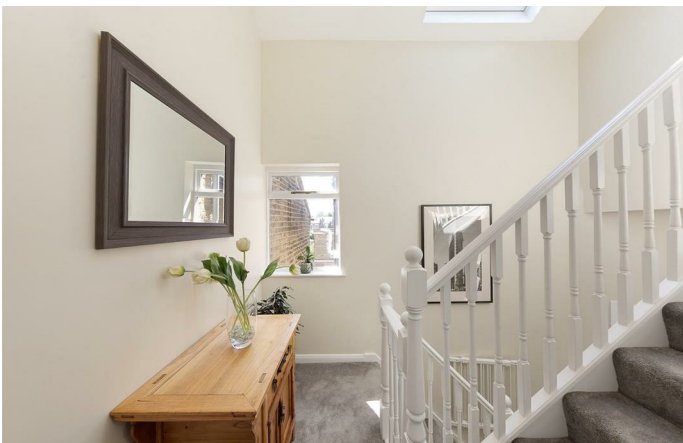
## Property Details

A spacious split-level, three double bedroom, two bathroom flat, with 1300 square feet of internal living space, between the amenities in Brixton and Clapham. The apartment offers generous proportions and is split over various levels, amplifying the feeling of space and creating a light and airy atmosphere throughout. The living space is fantastic: an L-shaped, open plan kitchen and reception room, with high ceilings, exposed wooden floors and lovely feature fireplaces. The recently fitted kitchen has been finished to a high standard and boasts a sociable breakfast bar, whilst there is also plenty of space for a large dining table. Large sash windows allow for an abundance of natural light, a running theme throughout the property. A comfortable double bedroom with views over the neighbouring gardens and a contemporary family bathroom complete the rooms on the first floor. Stairs lead upstairs to a further generous double bedroom and up on the top floor is the brilliantly executed loft conversion. This superb master-suite is complete with a luxurious ensuite shower room, plus a convenient dressing area/study.

Council tax band D    EPC rating C (76)

## Features

- Three double bedrooms
- Victorian conversion
- Split over various floors
- 1300 square feet of internal living space
- Spacious double bedrooms with an additional study
- Quiet residential street, walking distance from both Brixton and Clapham High Streets
- Easy reach to the Northern and Victoria tube lines





**K**

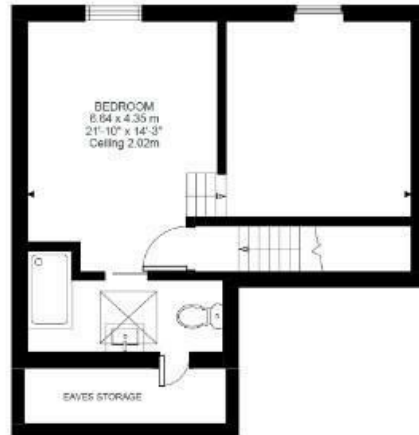
Winslade Road

3 Bed Flat

Approx internal area:

**1300 sqft 121 sqm**

While we do try our very best, floor plans are produced as a guide only and we take no responsibility for the precise accuracy with which any property is represented



Third Floor



Second Floor



First Floor



Winslade Road, Brixton, SW2

