

Dulwich Road, Herne Hill, SE24

2 bedroom flat - conversion for sale

£650,000

Share of Freehold

Property Details

This exceptional split level conversion flat occupies the upper floors of one of the grand Victorian houses on Dulwich Road, a popular road in this sought-after residential pocket, sandwiched between Herne Hill and Brixton, opposite beautiful Brockwell Park. Characterful features are a running theme throughout this beautifully presented apartment, with high ceilings, exposed wooden flooring, and pretty sash windows. With ninety square metres of internal living space, and a staircase meandering up through a central hallway, this lovely flat feels like a home, as soon as you walk through the door, smartly presented and ready for a purchaser to move in, hassle-free. Herne Hill station is a six-minute walk and Brixton tube station is a ten-minute stroll. London Bridge is accessible in twenty-four minutes, Canary Wharf in thirty-seven minutes and Victoria within sixteen minutes, door to door. The celebrated Herne Hill establishments are close-by and the restaurants and shops within the lauded Brixton Village, the amenities of the high street and Brixton Station are a ten-minute stroll.

Council tax band D EPC rating (null)

Features

- Two double bedrooms
- Grand semi-detached Victorian conversion
- Characterful features
- Split over two floors
- Over 950 square feet of internal living space
- Opposite Brockwell Park
- Sought-after residential street in the heart of Poets Corner
- Walking distance to Brixton and Herne Hill stations
- Share of freehold





Dulwich Road, Herne Hill, SE24

K

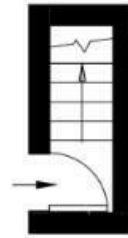
2 Bed Flat

Approx internal area:

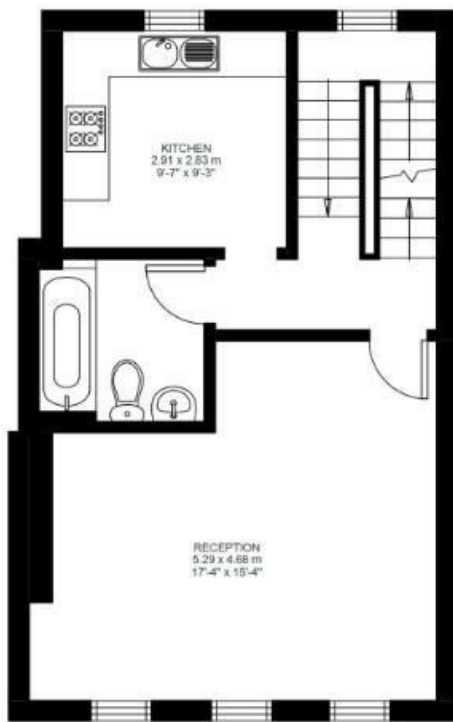
965 sqft 90 sqm

While we do try our very best, floor plans are produced as a guide only and we take no responsibility for the precise accuracy with which any property is represented

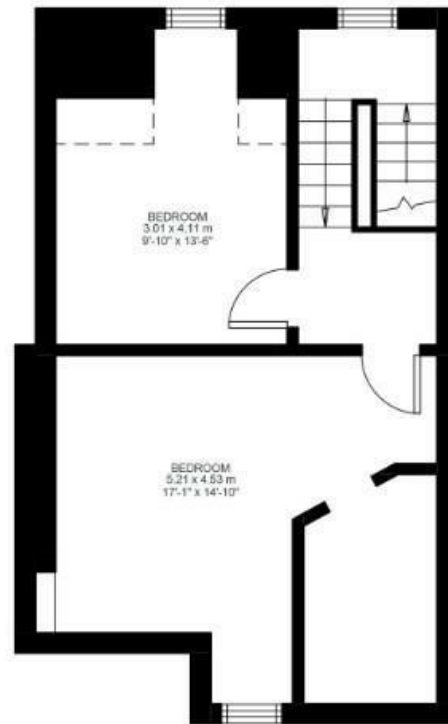
Dulwich Road



First Floor



Second Floor



Third Floor



Dulwich Road, Herne Hill, SE24

