



Kildoran Road, Brixton, SW2

2 bedroom flat - conversion for sale

£625,000

Share of Freehold

Property Details

A split level, two-bedroom, two-bathroom flat, occupying the top floors of a handsome Victorian terraced house, perfectly located in this popular residential pocket between Clapham and Brixton. With nearly 800 square feet of internal living space, the apartment offers generous proportions throughout and is split over various levels, amplifying the feeling of space and creating a light and airy atmosphere. There is a substantial reception room which spans the entire width of the building, packed full of characterful features and with ample room to relax and entertain: this charming room is sure to be used on a regular basis. A spacious separate kitchen diner sits at the rear of the property, providing plenty of space for a large dining table. The bedrooms are both a fantastic size, separated on different floors and tucked away quietly to the rear of the property. Both are generous double rooms, making the property an ideal investment for anyone looking to rent out a room or share with friends, along with the two modern bathrooms within the flat. There is also the fantastic benefit of a large loft, which is demised and could be converted into an additional double bedroom, subject to the necessary permissions.

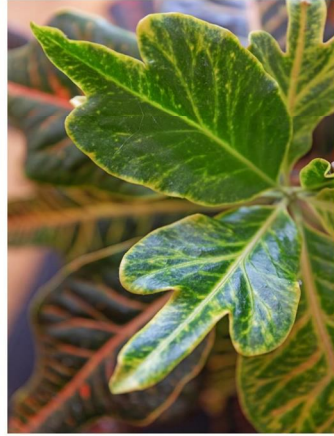
Council tax band D

EPC rating (null)

Features

- Two double bedrooms
- Two bathrooms
- Victorian conversion
- Characterful features
- Nearly 800 square feet of internal living space
- Split over various floors
- Substantial demised loft space (development potential STPP)
- Quiet residential street equidistant to Brixton and Clapham High Streets
- Walking distance to the Northern and Victoria tube lines
- Share of freehold





Kildoran Road, Brixton, SW2

K

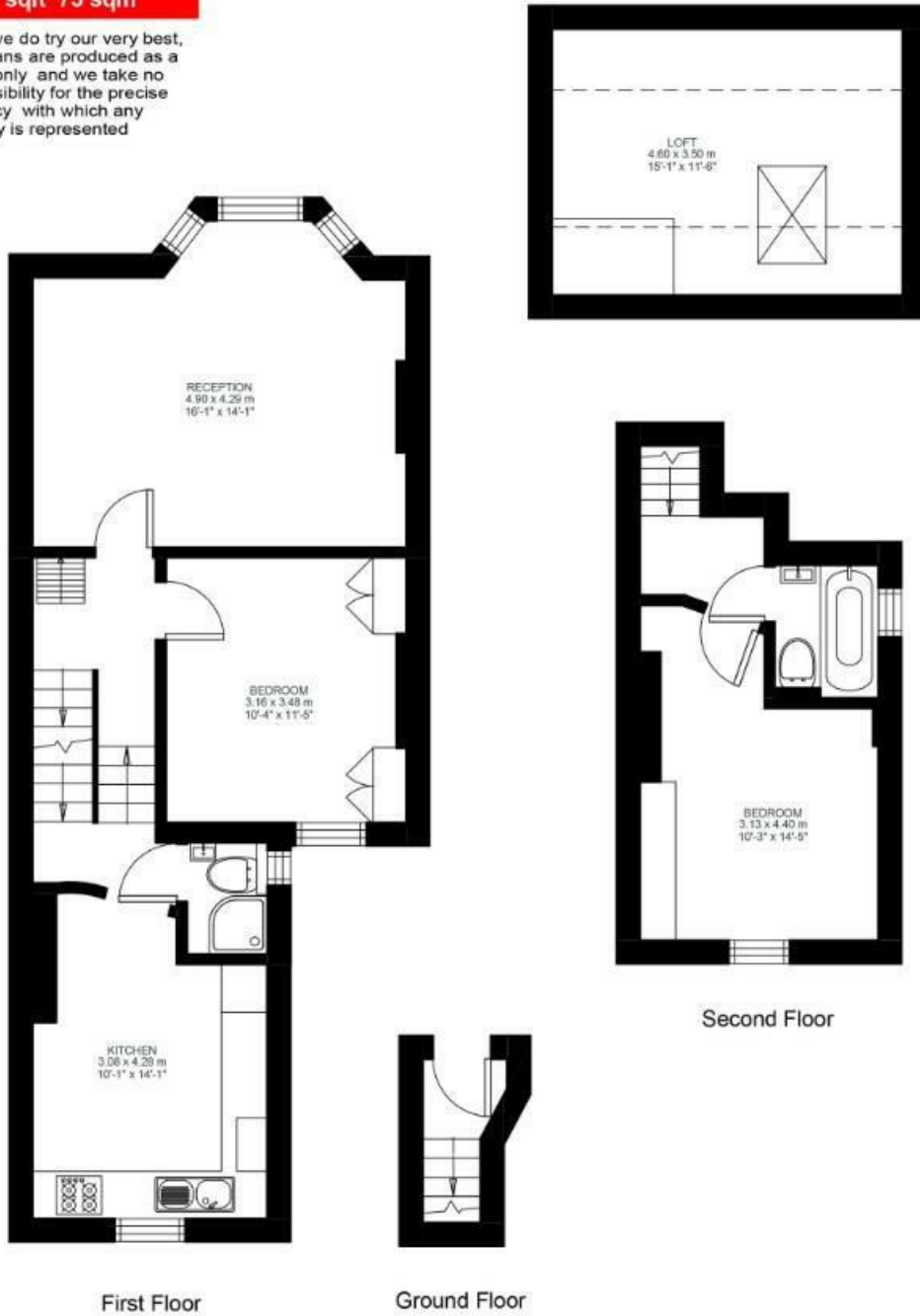
Kildoran Road

2 Bed Flat

Approx internal area:

781 sqft 73 sqm

While we do try our very best, floor plans are produced as a guide only and we take no responsibility for the precise accuracy with which any property is represented



Kildoran Road, Brixton, SW2

