



Sudbourne Road, Brixton, SW2

2 bedroom flat - conversion for sale

£529,950

Share of Freehold

Property Details

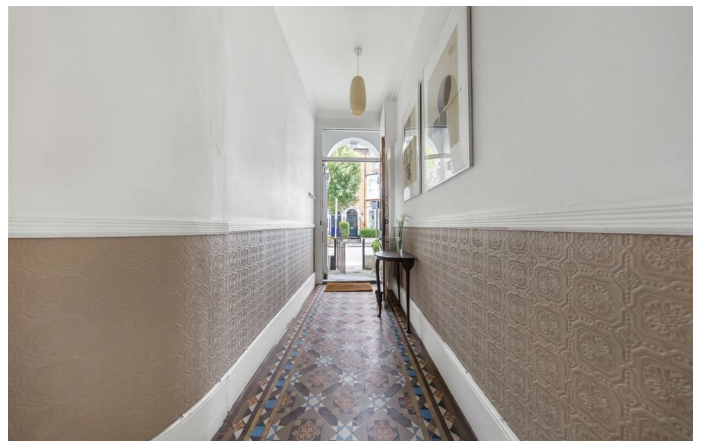
A wonderfully bright two-bedroom flat, packed full of character, nestled on one of the most sought-after residential streets in Brixton, Sudbourne Road. With over 800 square feet of internal floor space, some fantastic development potential with access to a large demised loft space, plus some beautiful original period features, this superb flat will be an exciting proposition for a wide range of purchasers. The property occupies the top floor of a handsome and well-maintained Victorian end-of-terrace house, surrounded by similarly grand and attractive houses, either side and opposite. The property is a short ten-minute stroll to the centre of Brixton, and first stop on the Victoria Line (arguably London's favourite Underground Line) at the tube station. In the other direction, purchasers will also benefit from everything that Clapham has to offer within a fifteen-minute walk. The award-winning Brockwell Park is a short stroll away, along with its iconic 1930's Lido and a pleasant walk through the park will bring you to leafy Herne Hill.

Features

- Two bedrooms
- Victorian conversion
- Split-level
- Over 800 square feet of internal living space
- Substantial demised loft space, which could be converted (STPP)
- Sought-after location close to Brixton tube station
- Share of freehold

Council tax band D

EPC rating (null)



Sudbourne Road, Brixton, SW2

K

2 Bed flat

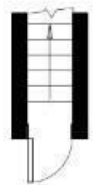
Approx internal area:

804 sqft 75 sqm

(excludes loft)

While we do try our very best, floor plans are produced as a guide only and we take no responsibility for the precise accuracy with which any property is represented.

Sudbourne Road



First Floor



Second Floor



Sudbourne Road, Brixton, SW2

