



**Stockwell Park Walk, Brixton, SW9**

**£539,950**

2 bedroom flat - purpose built for sale

## Property Details

We are delighted to offer to the market this well-presented, two double bedroom, two bathroom flat within this luxury modern development, situated in the heart of Brixton. Designed and executed with today's discerning homebuyers in mind, this flat is perfect for anyone who wants to be close to the action, situated in the heart of Brixton – a stone's throw from first stop on the Victoria Line, at Brixton station. Purchasers will have everything on the doorstep, whilst being tucked away in this beautifully designed development. The wonders of Brixton Village and POP Brixton are a couple of minutes' walk away, where purchasers will be able to sample the culinary delights of a different nation's cuisine every day. The green open spaces of the award-winning Brockwell Park are also within walking distance, along with its unrivalled sports facilities and iconic Lido. With two genuine double bedrooms, two bathrooms, a fantastic terrace and a wonderfully central location, this is a cracking flat that is likely to appeal to a wide range of purchasers – early registration of interest is advised.

## Features

- Two double bedrooms
- Two bathrooms
- Secure modern development
- Nearly 800 square feet of internal living space
- Private terrace
- Central location, moments from Brixton Village
- Excellent transport links, a few minutes walk from the tube and rail stations

Council tax band D      EPC rating B (84)







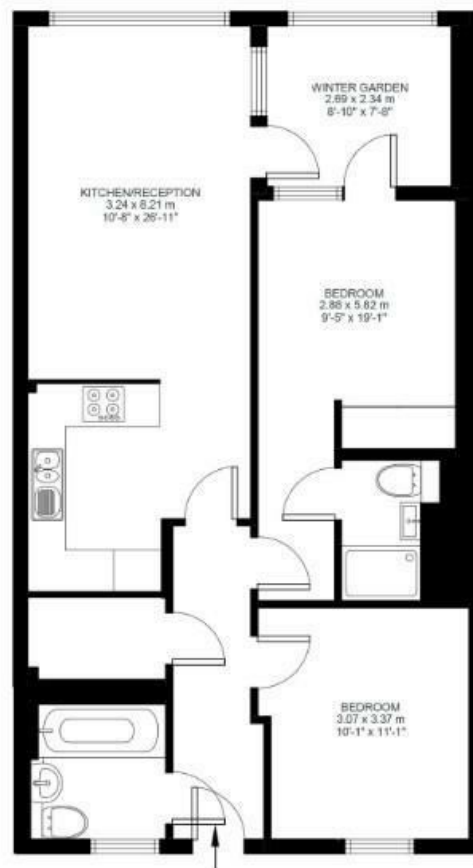
## Stockwell Park Walk

### 2 Bed Flat

Approx internal area:

**792 sqft 74 sqm**

While we do try our very best, floor plans are produced as a guide only and we take no responsibility for the precise accuracy with which any property is represented



First Floor





Stockwell Park Walk, Brixton, SW9

