



Milles Square, Brixton, SW9

£630,000

2 bedroom flat - penthouse for sale

Property Details

We are delighted to offer this exceptional two double bedroom, two bathroom penthouse apartment, on the top floors of this highly-sought-after, luxury development, perfectly located in the central Brixton. The grounds are well-maintained, boasting a concierge and convenient bike storage. The wonderfully light and airy reception room is open plan, with a fantastic living area and modern kitchen, fitted with all the mod cons you may need, whilst the reception area boasts vaulted ceilings and direct access onto a private balcony, offering uninterrupted views across the Brixton skyline. The apartment is South-West facing, resulting in many hours of sunshine and beautiful sunsets. This split-level penthouse apartment is perfect for anyone who wants to be close to the action, situated in the heart of buzzing Brixton - just around the corner from POP Brixton, Windrush Square and The Ritz. The wonders of trendy Brixton Village are right next door and purchasers will be able to sample the culinary offerings of local favourites every day.

Council tax band E EPC rating B (82)

Features

- Two double bedrooms
- Two bathrooms
- Tucked away quietly in the development, with maximum privacy
- Split over two floors with a mezzanine level
- Nearly 900 square feet of internal living space
- Spacious terrace spanning the entire width of the apartment
- Central location, moments from Brixton Village and the tube station
- South-West facing with uninterrupted views across the Brixton skyline
- Lift and concierge
- Chain-free



K

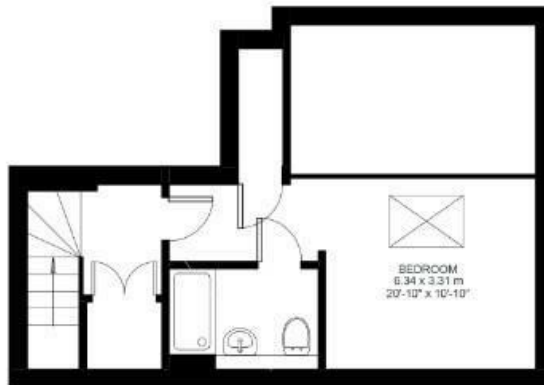
2 Bed Flat

Approx internal area:

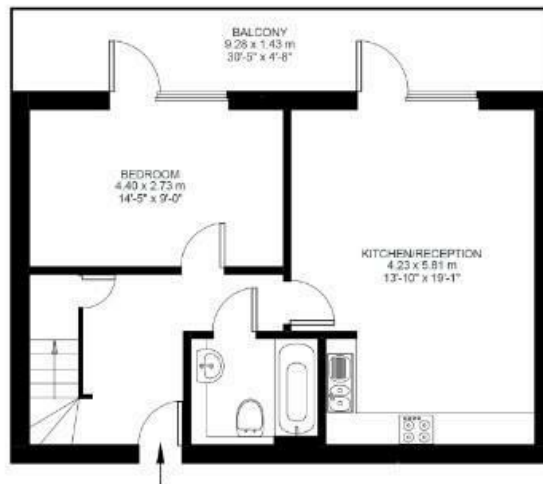
879 sqft 82 sqm

While we do try our very best, floor plans are produced as a guide only and we take no responsibility for the precise accuracy with which any property is represented

Milles Square



Fifth Floor



Fourth Floor



Milles Square, Brixton, SW9

