



## Kingswood Road, Brixton, SW2

4 bedroom house for sale

£1,025,000

Freehold

### Property Details

A characterful four double bedroom Victorian terraced house with a loft room and a sixty foot East facing private garden, located on a peaceful and sleepy terraced street, with easy access to Brixton, Clapham, Streatham Hill, Balham and Tulse Hill. This spacious home has been extended and is a fantastic blank canvas, ready for the new purchaser to move in and stamp their own mark over time. With almost 1900 square feet of living space on offer, four large bedrooms and a secluded garden to match, the property is sure to tick boxes for a wide range of purchasers. The property is a fifteen to seventeen-minute walk to both Brixton and Clapham Common and all that these two 'in-demand' areas have to offer. Situated a similar distance from both locations, potential purchasers will take advantage of some of the best transport links for a speedy route into central London, with the options of first stop on the Victoria Line, the Northern Line, the Overground, trains and multiples buses that run up and down both Kings Avenue and Brixton Hill.

Council tax band F      EPC rating E (53)

### Features

- Four double bedrooms and a loft room
- Victorian terraced house
- Characterful features
- Nearly 1900 square feet of internal living space
- 60 foot East facing private garden
- Cellar
- Walking distance to Brixton and Clapham town centres
- Freehold







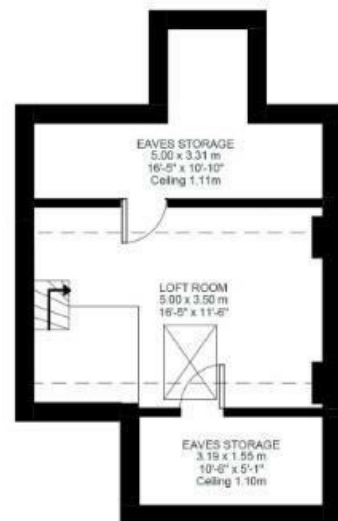
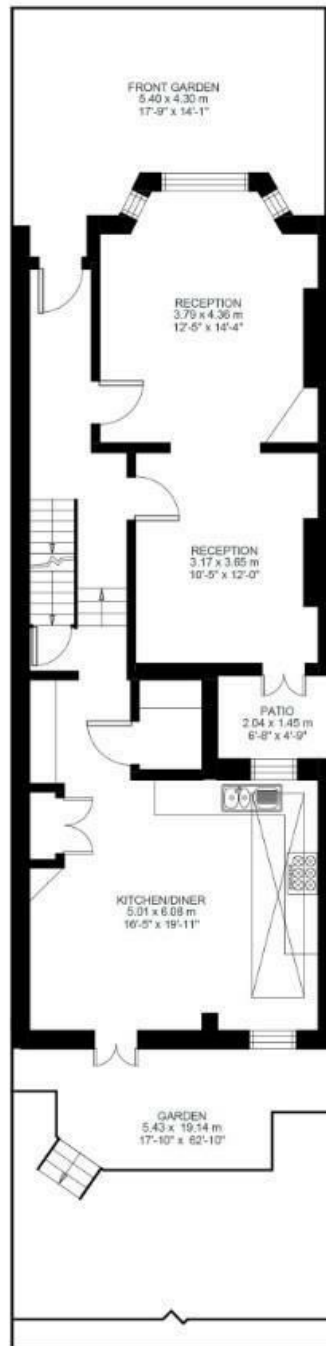
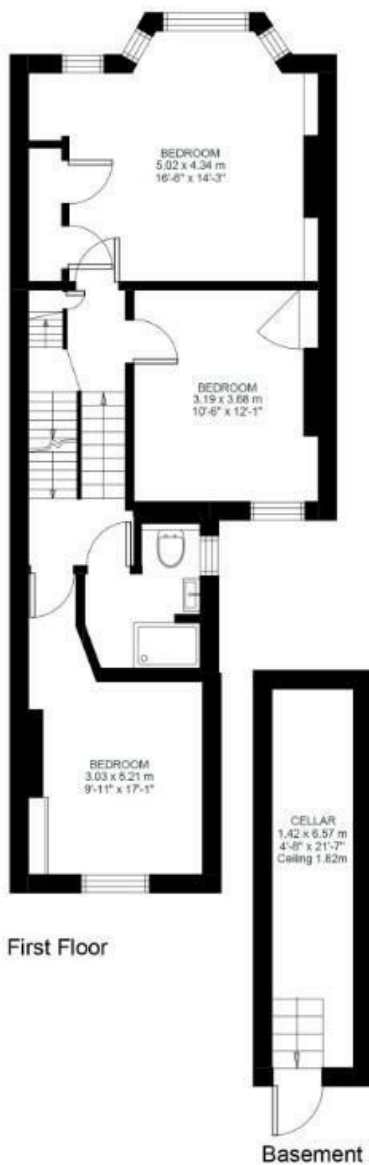
## 5 Bed House

Approx internal area:

**1861 sqft 173 sqm**

(EXCLUDING EAVES STORAGE)  
EAVES STORAGE 21.49 SQ.M / 231 SQ.FT  
INCLUSIVE TOTAL AREA 194.49 SQ.M / 2093 SQ.FT

While we do try our very best,  
floor plans are produced as a  
guide only and we take no  
responsibility for the precise  
accuracy with which any  
property is represented



Second Floor



Second Floor  
(Rear Addition)





Kingswood Road, Brixton, SW2

