

**Glenelg Road, Brixton, SW2**

2 bedroom maisonette for sale

**£615,000**

Share of Freehold

## Property Details

A well-presented, two double bedroom Victorian maisonette, perfectly positioned on Glenelg Road, a sleepy residential street, perfectly located between Brixton and Clapham. The property is accessed through its own front door and into a bright hallway. To the front of the flat is a smart reception room, tastefully finished and packed full of character, including sash windows, a feature fireplace, high ceilings, and exposed wooden flooring. Adjacent is a spacious double bedroom with built-in storage, a charming feature fireplace and views onto the private rear patio. The eat-in kitchen is the perfect central hub of the flat. There is plenty of room for a large dining table, perfect for those who enjoy entertaining on a regular basis. The space flows effortlessly onto a low-maintenance private garden. To the rear of the property, the master bedroom is tucked away quietly, along with the sleek, recently fitted bathroom with stylish tiling.

## Features

- Two double bedrooms
- Victorian purpose-built apartment
- Private entrance
- Characterful features
- 730 square feet of internal living space
- Private garden
- Within a ten-minute walk to Brixton and Clapham High streets
- Access to the Northern and Victoria tube lines
- Share of freehold

Council tax band      EPC rating (null)



# K

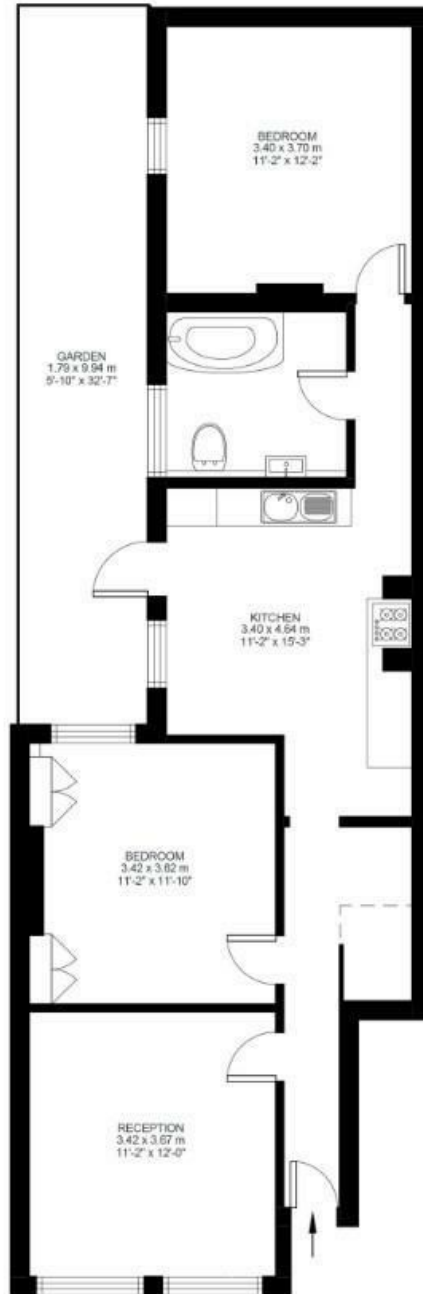
## 2 Bed Flat

Approx internal area:

**730 sqft 68 sqm**

While we do try our very best, floor plans are produced as a guide only and we take no responsibility for the precise accuracy with which any property is represented

## Glenelg Road



Ground Floor



Glenelg Road, Brixton, SW2

